

UK Full Licence Maths

**Keith Williams
GW40KT**

About the Author



My main passion is for engineering training and competence development. I was able to write a number of training manuals for instrumentation and control systems during my years with a major oil company and an extension to that, is this book, which I have really enjoyed writing.

On the radio front, I was first licensed as G6CVK in 1981 and as G4OKT the following year. During an assignment in the Sultanate of Oman I operated as A45WB.

Now retired, my interests include 6 metres, CW, experimenting with antennas and a little DXing.

I taught the old RAE in the early 1990s and more recently have delivered Foundation/Intermediate/Advanced courses at Mold & District Radio Society. At the time of writing, I am an 'online' tutor for the Bath Based Advanced Distance Learning course.

Table of Contents

About the Author	2
Table of Contents	3
Introduction	5
Preparing for the advanced course	5
Fig.1 Calculator functions	6
The Formula Sheet	7
Units & Symbols	7
Table. 1 Units & Symbols	7
Engineering notation	8
Dealing with Large units	8
Table 2. Large number notation	8
Dealing with small units	9
Calculating - total resistance of resistors in series	11
Fig.1 Resistors in series	11
Calculating - total resistance of resistors in parallel	11
Fig.2 Resistors in parallel	12
The 'product over sum' rule	13
Resistors of the same value	13
The parallel/series resistor network	14
Fig.3 Parallel/Series network	14
Ohm's Law	15
Transposition of formulae	15
Numerator and denominator	16
Power Current & Voltage	16
Fig.4 Series/parallel network	20
Potential divider calculation	21
Fig.5 The potential divider network	21
Calculations with Capacitors	22
Capacitors with the same value	22
Capacitors in series	22
Capacitors in parallel	22
Two capacitors in parallel-product over sum rule	22
Relationship between area, distance between plates and dielectric constant	23
Fig.6 Capacitors in series	23
Fig.7 Capacitors in parallel	24
Charging & discharging a capacitor through a resistor	26
Fig.8 Capacitor charge & discharge	26
Fig.9 Capacitor charge & discharge curves	26
Resistor & capacitor in series	28
Fig.10 Vector addition of V_R and V_C	28
Resistor & inductor in series	29
Fig.11 Vector addition of V_R and V_L	29
Inductors in series	30
Inductors in parallel	30

Time constant of circuit containing inductance and resistance	30
Fig.12 Inductor charge circuit.....	30
Fig.13 Inductor charge curve	31
Alternating currents and voltages	31
Fig.14 The sinusoidal waveform (sine wave).....	31
Capacitive reactance.....	33
Inductive reactance.....	35
Impedance	36
Series RLC Circuit example	39
Dynamic impedance/resistance.....	40
Fig.13 Parallel tuned circuit.....	40
Transformer Ratios	41
Fig.14 Transformer ratios	41
The Decibel	44
Effective Radiated Power – ERP.....	44
Calculating field strength	45
Calculating SWR.....	47
Calculating Return Loss	49
Calculating Power Gain/Loss.....	50
The dBWatt (dBW).....	51
Calculating transistor gain β	52
Calculating Q Factor & Bandwidth	53
Feeders and Antennas.....	53
Phase locked loop.....	54
Measurements	55
Transposing the Resonant frequency formula for L or C.....	59

Introduction

Many radio amateurs are successfully passing the UK Foundation and Intermediate examinations and are keen to take on the challenge of the Full course and examination.

There is quite a gap however, in terms of the competence required to handle the 'dreaded' mathematics. Many people have not studied maths for years and indeed they may not have even been taught the maths well, for many it remains one of those subjects that is just impossible to describe as FUN!

Having returned from overseas assignments, I have been teaching all three levels of licence and now I have some experience, I can see that maths is clearly the one subject that is preventing good radio amateurs from progressing further with the licence.

When attempting to understand the subjects of the advanced course you will see that the language changes a little, from English to maths, it is the language of electrical engineering and indeed physics in general, especially at this level, it is the only way that these engineering/physics concepts can be explained fully.

When you read maths books there is a great tendency for authors to jump steps, such that when a student is trying to follow the workings of an equation it is easy to become lost, especially as most students have not used maths for years. What I have attempted in this book, is to describe the maths in layman's terms and also include plenty of worked examples of every equation in the formula sheet that is issued for the UK advanced exam.

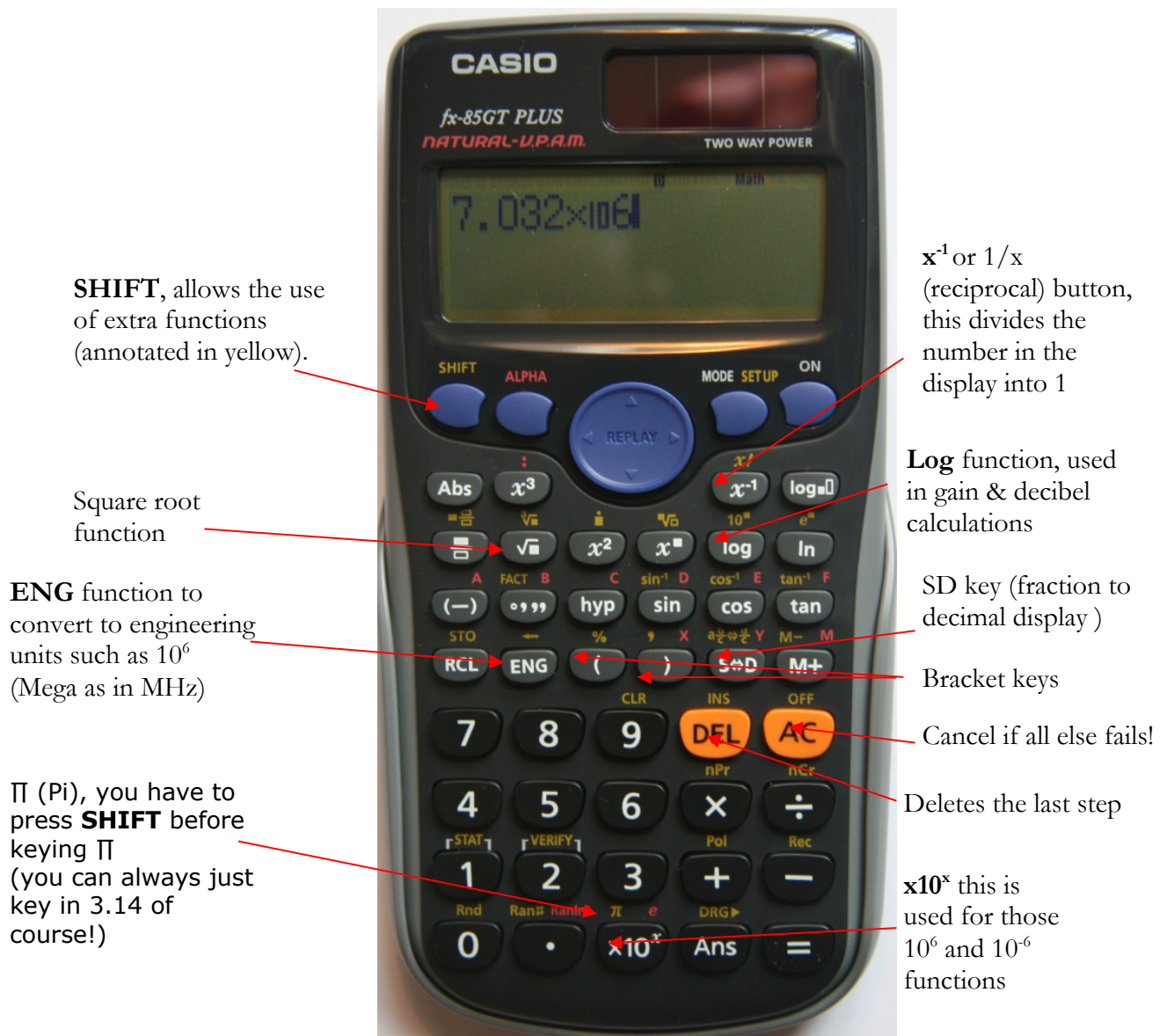
So good luck with your reading and please take your time to understand the examples.

Preparing for the Full licence course

You will need a decent calculator, one with functions such as logarithms, squares, square roots, $1/x$, (x^{-1}) and so on. Included on each worked example within this book is a key press sequence to help you become familiar with your calculator.

Here are some typical functions you will use:

Fig.1 Calculator functions



The Formula Sheet

This is provided in the exam, it can also be found on the RSGB website as part of the Full Licence Exam Specification – (Section 2).

This book will provide examples of all the formulas required for the Full Licence exam, as listed in the exam specification formula sheet.

Units & Symbols

In order to manipulate information for calculations we need to be aware of the symbols and units used, so here is a list used in the ‘Full Licence’ course for reference:

Table. 1 Units & Symbols

Physical entity	Symbol	Unit	Abbreviation	Typical use
Current	I	Ampere	A	μA , mA, A
Voltage	V	Volt	V	μV , mV, V, kV, MV
Resistance	R	Ohm	Ω	Ω , k Ω , M Ω
Capacitance	C	Farad	F	pF, nF, μF
Inductance	L	Henry	H	μH , mH
Impedance	Z	Ohm	Ω	Ω , k Ω , M Ω
Power	P	Watt	W	μW , mW, W, kW, MW,
Energy	E	Joule	J	μJ , mJ, J, kJ
Charge	Q	Coulomb	C	C
Frequency	f	Hertz	Hz	Hz, kHz, Mhz, Ghz
Period	T	second	S	μs , ms, s
Wavelength	λ (lambda)	metre	M	mm, m, km
Time constant	τ (tau)	second	S	μs , ms, s

In the part of the table labelled ‘Typical use’, you can see that there are prefixes before the units such as p, n, μ , m, k, M and G, these are used to represent very large or very small quantities of that particular entity such as power or volts.

In order to see how these prefixes are used we need to look at a subject called ‘engineering notation’.

Engineering notation

Dealing with Large units

These are units such as kilohertz (kHz), Megahertz (Mhz), kilovolts (kV), Gigahertz (GHz).....

First of all let's start off with $2 \times 2 = 4$this is the same as 2^2 . Remember that any number multiplied by its self is 'squared', we have attached 2 to the back of the number to indicate that it is multiplied by itself.

Similarly we can see that 2^3 is the same as $2 \times 2 \times 2$, which is equal to 8.

2^4 is the same as $2 \times 2 \times 2 \times 2 = 16$. In 'math-speak' this is known as raising the number 2 to the power of 2, 3 or 4 etc.

This applies to any number, but the one we are interested in is 10, this is the one used in engineering notation.

To represent large values we can utilize the process of raising to the power 2, 3 or 4 etc.

Table 2. Large number notation

	Notation	Prefix	Meaning	
1	10^0		1	
10	10^1		10	
10×10	10^2			
$10 \times 10 \times 10$	10^3	Kilo (k)	1000	Thousand
$10 \times 10 \times 10 \times 10$	10^4			
$10 \times 10 \times 10 \times 10 \times 10$	10^5			
$10 \times 10 \times 10 \times 10 \times 10 \times 10$	10^6	Mega (M)	1000000	Million
$10 \times 10 \times 10 \times 10 \times 10 \times 10 \times 10$	10^7			
$10 \times 10 \times 10 \times 10 \times 10 \times 10 \times 10 \times 10$	10^8			
$10 \times 10 \times 10 \times 10 \times 10 \times 10 \times 10 \times 10 \times 10$	10^9	Giga (G)	1000000000	Billion

As you can see from this, using a term such as 10^6 can save writing a lot of zeroes!

As an example a frequency of 28 Megahertz, or 28 MHz as we would normally write, is expressed in engineering notation as 28×10^6 , meaning that it is 28 multiplied by 10, multiplied by itself 6 times, which is a million, we use the term Mega (with a capital M) to represent this.

When you use a calculator and have an answer in the display that is numerically very long, you can press the ENG key and reduce it to engineering units.

For example:

05/10/2020

The frequency of 2945979.78 Hz, press ENG = 2.94×10^6 Hz and because 10^6 means Mega our answer is 2.94MHz

The voltage of 1304.75 V, press ENG = 1.304×10^3 V and because 10^3 = kilo, we have 1.304 kV

Notice that engineering units go in steps of 3, i.e. 10^3 , 10^6 , 10^9

Dealing with small units

These are units such as millihenries (mH), microvolts (mV), nanofarads (nF), microamps (μ A), picofarads (pF).

Table 3. Small unit notation

	Notation	Prefix	Meaning	
1/1	10^0		1	
1/10	10^{-1}		0.1	Tenth
1/100	10^{-2}		0.01	Hundredth
1/1000	10^{-3}	milli (m)	0.001	Thousandth
1/10000	10^{-4}			
1/100000	10^{-5}			
1/1000000	10^{-6}	micro (μ)	0.000001	Millionth
1/10000000	10^{-7}			
1/100000000	10^{-8}			
1/1000000000	10^{-9}	nano (n)	0.000000001	Billionth
1/10000000000	10^{-10}			
1/100000000000	10^{-11}			
1/1000000000000	10^{-12}	Pico (p)	0.000000000001	

Again the engineering units are in steps of 3, only this time to indicate they are being divided into 1 they have a minus sign i.e. 10^{-3} , 10^{-6} , 10^{-9} .

If you have an answer in your calculator display that is a long number such as, 0.0000367, simply press the ENG key and you can display it as 3.67×10^{-5} , notice that this is not a familiar engineering unit so press ENG again and you will see 36.7×10^{-6} , which you may recognise as 'micro'.

You will have plenty of practice of engineering units during the course of this book.

Let's start by expressing some values as engineering units.

- Q1. Express 47microhenries (47μ H) in engineering units
- Q2. Express 220picofarads (22pF) in engineering units
- Q3. What is 14.22×10^6 Hz
- Q4. What is $3.3 \times 10^3 \Omega$
- Q5. Express 456.78×10^{-7} F in engineering units

Answers:

Q1. We can see that the prefix is micro, which means multiply by 10^{-6}
So the key press sequence for the calculator would be:

47
x10^x (this button is on the bottom row of the calculator)
(-) (on the Left side of the calculator)
6

You have expressed it correctly now, but if you now press = you will see it expressed as 47/1000000)
Pressing ENG again gives you the original expression of **47x10⁻⁶**

Q2. In a similar way, the prefix is pico which means multiply by 10^{-12}
The calculator key sequence is:

220
x10^x
(-)
12

pressing = gives you 2.2×10^{-10}
pressing ENG again takes you back to **220x10⁻¹²** which is a more familiar way of expressing it.

Q3. $14.22 \times 10^6 \text{ Hz}$referring to the table, 10^6 means Mega so the answer is **14.22 MHz**

Q4. $3.3 \times 10^3 \Omega$here the 10^3 means kilo, so the answer is **3.3kΩ**

Q5. $456.78 \times 10^{-7} \text{ F}$, the key sequence is:

456.78
x10^x
(-)
7
= (gives 4.5678×10^{-5})

05/10/2020

ENG gives 45.678×10^{-6} (F) which is **45.678 μ F** since $\mu = 10^{-6}$

Notice that we have only moved the decimal point 1 place to the right. With practice you could do this part of the manipulation in your head without using the calculator.

Calculating - total resistance of resistors in series

$$R_T = R_1 + R_2 + R_3 + \dots R_n$$

R_T is the total resistance you want to calculate. The small n is used to denote that any number can be used, i.e. you can calculate for any number of resistors in series.

Notice that R_T is **the subject of the equation** and is always on the left hand side (LHS) of the 'equals' (=) sign.

This is simple addition.

Consider this example:

A circuit has 3 resistors $R_1 = 50\Omega$, $R_2 = 100\Omega$, $R_3 = 150\Omega$ connected in series. Calculate the total value of resistance in the circuit

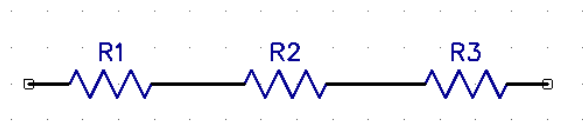


Fig.1 Resistors in series

Using our formula above:

$$R_T = R_1 + R_2 + R_3$$

$$R_T = 50 + 100 + 150$$

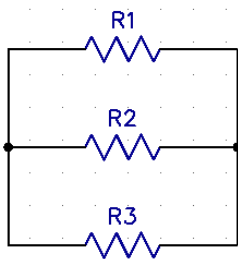
$$R_T = 300\Omega$$

Calculating - total resistance of resistors in parallel

$$\frac{1}{R_T} = \frac{1}{R_1} + \frac{1}{R_2} + \frac{1}{R_3} + \dots \frac{1}{R_n}$$

R_T is again the total resistance you want to calculate, so as a final step in our calculation as you will see later, we have to invert our calculation using the \mathcal{X}^{-1} button.

Q6. Three resistors $R_1 = 50\Omega$, $R_2 = 100\Omega$, $R_3 = 150\Omega$, are connected in parallel, calculate the total resistance R_T .



It is always a good idea to draw the circuit prior to the calculation, especially if it is not a simple one; this is what electrical engineers are taught to do early on in their studies.

Fig.2 Resistors in parallel

Here we can see that with more than one path for the current to flow, the total resistance logically must be smaller than the smallest resistor, (since there are multiple paths for the current to flow) which in this case is R1 (50Ω).

$$\frac{1}{R_T} = \frac{1}{R_1} + \frac{1}{R_2} + \frac{1}{R_3}$$

$$\frac{1}{R_T} = \frac{1}{50} + \frac{1}{100} + \frac{1}{150}$$

$$\frac{1}{R_T} = \frac{11}{300}$$

$$R_T = \frac{300}{11} = 27.27\Omega$$

The key sequence for this calculation is:

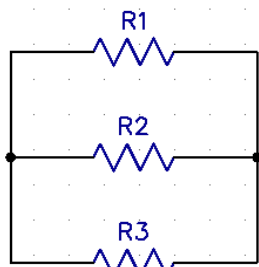
```
50
x-1
+
100
x-1
+
150
x-1
= (shows answer of 11/300)
x-1 (shows Ans-1 to indicate inversion)
= (shows 300/11)
S<>D 27.27 (Ω)
```

Note: this value is less than the smallest resistor (50Ω).

NB. If you are not happy with having to press the SD button to get the answer to decimal rather than fraction, press SHIFT : MODE(setup) : 2 (Line10), the default will then be decimal.

Try another example with different resistor values

Q7. Three resistors are connected in parallel, R1=330Ω, R2=1.2kΩ, R3=47kΩ. Calculate the total resistance R_T. In this example you can practice the use of engineering units - don't forget to invert the calculation result as a final step.



$$\frac{1}{R_T} = \frac{1}{R_1} + \frac{1}{R_2} + \frac{1}{R_3}$$

$$\frac{1}{R_T} = \frac{1}{330} + \frac{1}{1.2 \times 10^3} + \frac{1}{47 \times 10^3}$$

$$\frac{1}{R_T} = 3 \times 10^{-3} + 8.33 \times 10^{-4} + 2.127 \times 10^{-5}$$

$$\frac{1}{R_T} = 3.885 \times 10^{-3}$$

$$R_T = \frac{1}{3.885 \times 10^{-3}}$$

$$R_T = 257\Omega$$

Key sequence is:

```
330
x-1
+
1.2
x10x
3
x-1
+
47
x10x
3
x-1
= (shows answer of
3.8849x10-3)
x-1 (shows Ans-1 to
indicate inversion)
= 257
```

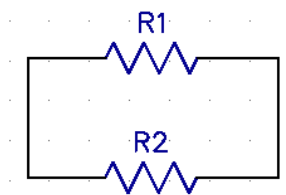
The 'product over sum' rule

This is used for two resistors (or inductors) in parallel only. (You can still use the traditional method of course).

$$R_T = \frac{R_1 \times R_2}{R_1 + R_2}$$

Where the 'product' is the result of a multiplication X
and the 'sum' is the result of an addition +

Q8. What is the total resistance of a 22Ω resistor in parallel with a 47Ω resistor? (Just make R1=22 & R2 =47)



$$R_T = \frac{R_1 \times R_2}{R_1 + R_2}$$

$$R_T = \frac{22 \times 47}{22 + 47}$$

$$R_T = \frac{1034}{69}$$

$$R_T = 14.98\Omega$$

The key sequence is below, (put the product and the sum in brackets first) i.e. (22x47) & (22+47).

```
(
22
X
47
)
÷
(
22
+
47
)
= (gives 1034/69)
S<>D 14.98
```

Resistors of the same value

If you have 'n' parallel resistors, each with resistance R, the total resistance is given by $R_T = R/n$

So- if you connect two 100Ω resistors in parallel, the resultant will be $100/2 = 50\Omega$. The same goes for three resistors in parallel, three 100Ω resistors in parallel will result in $100/3 = 33.33\Omega$. Four 100Ω resistors in parallel are $100/4 = 25\Omega$.

This can be put to good use when building QRP dummy loads since 3 resistors of 150Ω connected in parallel results in $150/3 = 50\Omega$.

The parallel/series resistor network

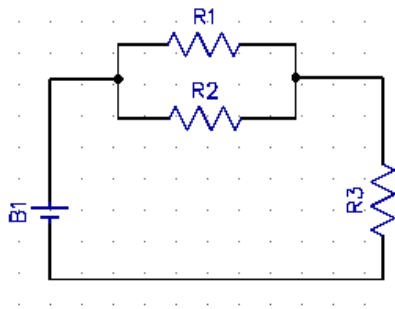


Fig.3 Parallel/Series network

A popular question in the intermediate exam involves calculating the total resistance of this network. First you need to calculate the value for the R1 & R2 parallel network and then ADD the result to the resistor R3 which is in series, (remember series resistances just add together).

To calculate the value of the R1 & R2 network, you can use the product over sum rule since it is the 'two' resistor case.

Q9. Using the circuit above, $R_1 = 220\Omega$, $R_2 = 180\Omega$ & $R_3 = 56\Omega$.

Calculate the total value of resistance R_T in the circuit.

First, calculate the value for the parallel network, we can call it R_p .

$$R_p = \frac{R_1 \times R_2}{R_1 + R_2}$$

$$R_p = \frac{220 \times 180}{220 + 180}$$

$$R_p = \frac{39600}{400}$$

$$R_p = 99\Omega$$

Key sequence is:

```
(
220
X
180
)
÷
(
220
+
180
)
=99
```

Now we need to add this value to that of R3 which is in series

$$\text{So } R_T = 99\Omega + 56\Omega = 155\Omega$$

In practice, the exam question may include resistance values that have mixed units, so you may have to deal with kilo and Mega so I would practice using these.

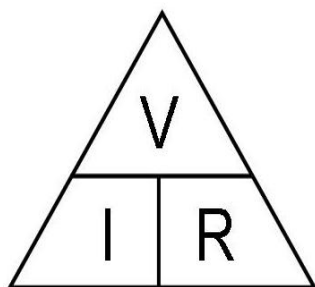
Be careful not to rush your key presses on the calculator and don't be afraid to check your answers, there is plenty of time in the exam!

Ohm's Law

This is a widely used law that you must be familiar with, if you are to have any chance of understanding electrical circuit functions.

The basic formula is: $V = I \times R$ meaning that the voltage is simply the product of the current I multiplied by the resistance R .

This formula can be rearranged of course, some people like to use the 'triangle' method to remember how to make V , I or R , the subject of the equation:



If you wish to make the Current I , the subject of the equation, simply put your finger over the 'V' symbol and what you have left looks like V over R .

If you need to make 'R' the subject, cover up R and you are left with V over I .

It is a useful reminder and the same idea can be used for $P = I \times V$, as we will see later.

BUT – you really need know how to rearrange formulas to make different components the subject without having to refer to triangles, this is called 'transposition' of the formula.

Transposition of formulae

One of the basic rules of transposition is that whatever you do to the right hand side (RHS) of the equation, you must also do to the left hand side (LHS).

Let's take a closer look at Ohm's law.

$V = I \times R$ if we need to find the current I , we need to get it by itself on one side of the equation, to do this we can divide both sides of the equation by R so we now have:

$$\frac{V}{R} = \frac{I \times \cancel{R}}{\cancel{R}} \quad \text{.....now these two Rs cancel each other out}$$

which leaves us with.... $\frac{V}{R} = I$

Similarly if we want to make R the subject of the equation we need to get it by itself on one side. So we can divide both sides of the original equation by I :

.....now the I s cancel out

$$\frac{V}{I} = \frac{\cancel{I} \times R}{\cancel{I}} \quad \text{which leaves us with....} \quad \frac{V}{I} = R$$

This is the basis of most of the transposition you will be dealing with

Notice that if you move an expression from one side of the equation to the other it moves from the *numerator* to *denominator* and vice versa as a result of the move.

So if we look at the original $V = I \times R$ expression, moving the R over to the LHS means it has to go in the *denominator* position, (beneath the V in this case).

Giving $\frac{V}{R} = I$

Numerator and denominator

The number or expression above the fraction bar (the dividend)



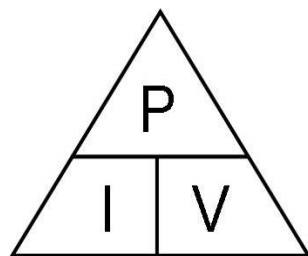
Numerator

The number or expression below the fraction bar (the divisor)



Denominator

Power Current & Voltage



Again, the relationship between the three variables can be expressed as a triangle. The method used to find the subject is the same as the Ohm's law triangle. It will come as no surprise then that the transposition method is the same. In the exam, either method can be used of course, it is up to you.

So, $P = I \times V$ and if we need to find I , we need to get it by itself on one side of the equation, to do this we can divide both sides of the equation by V so we now have:

$$\frac{P}{V} = \frac{I \times V}{V}$$

.....now these two Vs cancel each other out

this leaves us with... $\frac{P}{V} = I$

Similarly if we want to make V the subject of the equation we need to get it by itself on one side. So we can divide both sides of the original equation by I :

$$\frac{P}{I} = \frac{\cancel{I} \times V}{\cancel{I}} \dots \text{now the Is on the RHS cancel out}$$

which leaves us with.... $V = \frac{P}{I}$

You can check this using the triangle method!

In the advanced licence course, the most difficult formula to transpose is the one for resonant frequency and once you can work through that, you will have all the transposition skills required for the advanced exam! This is dealt with in Appendix A.

Before moving on, let's attempt some (direct current related) Ohm's law and PIV questions.

Q10. A 12V car battery is used to supply a radio transceiver on the 2m band.
The current drain is 10A, what is the total power consumed?

$$P = I \times V$$

$$P = 10 \times 12$$

$$P = 120 \text{ watts}$$

Key sequence is:

```
10
X
12
=120
```

Q11. A torch bulb is supplied with 12V and draws 1.5A, what is its resistance?

$$R = \frac{V}{I}$$

$$R = \frac{12}{1.5}$$

$$R = 8\Omega$$

Key sequence is:

```
12
÷
1.5
= 8
```

Q12. A car headlamp is rated at 80W and is supplied with 12V, what current will flow through the lamp?

$$I = \frac{P}{V}$$

$$I = \frac{80}{12}$$

$$I = 6.66A$$

Key sequence is:

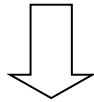
```
80
÷
12
= 6.66
```

You will notice that there are two other expressions we can use for power:

$$P = I^2 \times R \text{ and } P = \frac{V^2}{R}$$

You may be wondering where they came from – they are derived from

$$P = I \times V \text{ and } V = I \times R$$



Starting with $P = I \times V$ we also know that $V = I \times R$

So replacing V in the PIV formula with $I \times R$, gives $P = I \times I \times R$

or simply $P = I^2 \times R$

Similarly, if we change $V = I \times R$ to $I = \frac{V}{R}$

we put this back into the $P = I \times V$ equation.....

and we now have: $P = V \times \frac{V}{R}$ or simply $P = \frac{V^2}{R}$

We will use these variants of the power formula later.

In reality, the examiners for the advanced course will want to see an understanding of the use of engineering notation and you will not be required to derive these formulas in the exam. What is required is a question that includes both large and small numbers and also encompasses a few equations at once.

Let's try use of VIR and PIV with large and small numbers and then move on to a typical exam question.

Q13. A 12V car battery is used to supply a radio system. The current drain is 800mA, what is the total power consumed?

$$P = I \times V$$

$$P = 800 \times 10^{-3} \times 12$$

$$P = 9.6 \text{ watts}$$

Key sequence is:

800

X10^x

(-)

3

X

12

= 9.6

Q14. A small electronic circuit is supplied with 12V and draws 330 μ A, what is its resistance?

$$R = \frac{V}{I}$$

$$R = \frac{12}{330 \times 10^{-6}}$$

$$R = 36 \times 10^3$$

$$R = 36k\Omega$$

Key sequence is:

```
12
÷
330
X10^
(-)
6
= 36363
ENG 36X10^3
```

Q15. The current in a circuit of total resistance 47 Ω is 325mA, what is the power consumed?

$$P = I^2 \times R$$

$$P = (325 \times 10^{-3})^2 \times 47$$

$$P = 0.105 \times 47$$

$$P = 4.96 \text{ watts}$$

Key sequence is:

```
(
325
X10^
(-)
3
)
x^2
x
47
= 4.96
```

Q16. A load resistor of value 33k Ω has a voltage across it of 6.3Volts. What is the power dissipated in the load?

$$P = \frac{V^2}{R}$$

$$P = \frac{6.3^2}{33 \times 10^3}$$

$$P = \frac{39.69}{33 \times 10^3}$$

$$P = 1.2 \times 10^{-3}$$

$$P = 1.2 \text{ milliwatts}$$

Key sequence is:

```
6.3
x^2
÷
33
X10^
3
= 1.2x10^-3
```

This next example is a more realistic standard for the exam, though it would probably occupy the space of three questions.

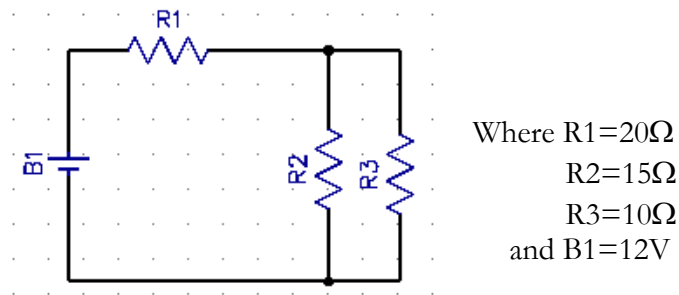


Fig.4 Series/parallel network

Q17. What is the current flowing from the battery?

Q18. What is the voltage across R_2 ?

Q19. What is the power dissipated in R_3 ?

Q17. Answer

First, find the Total resistance of the circuit, (remember you did this earlier). In the exam the common configuration is one resistor in series connection with two in parallel. So as it is only two resistors in parallel, you can use the **'product over sum'** rule.

$$R_p = \frac{R_1 \times R_2}{R_1 + R_2}$$

$$R_p = \frac{15 \times 10}{15 + 10}$$

$$R_p = \frac{150}{25}$$

$$R_p = 6\Omega$$

Key sequence is:

```
(
15
X
10)
÷
(
15
+
10
)
= 6
```

This 6Ω can now be added to the series resistor R_1 (20Ω) so the total circuit resistance, R_T is $20 + 6 = 26\Omega$

This is a good start since we know the supply voltage is 12V and we know the resistance, we can calculate the current (I) flowing through the circuit using Ohm's law:

$$I = \frac{V}{R_T}$$

$$I = \frac{12}{26}$$

$$I = 0.46A$$

Key sequence is:

```
12
÷
26
=0.46
```

Q18. Answer

The voltage across R2 is the same as R3 as they are connected in parallel, (which is the same as an equivalent 6Ω resistor).

The current flowing in the whole circuit is 0.46A and this also flows through the parallel combination of R2 & R3. We can find the voltage across this combination using Ohm's law.

$$V = I \times R$$

$$V = 0.46 \times 6$$

$$V = 2.76 \text{ Volts}$$

Key sequence is:

0.46

X

6

=2.76

Q19. Answer

The power dissipated in R3 is given by $P=IV$, but we do not have a value for I within the parallel combination, so we can use:

$$P = \frac{V^2}{R_3}$$

$$P = \frac{2.76^2}{10}$$

$$P = \frac{7.62}{10}$$

$$P = 0.762 \text{ watts}$$

Key sequence is:

2.76

X²

÷

10

=0.762

Potential divider calculation

$$V_{out} = V_{in} \times \frac{R_2}{R_1 + R_2}$$

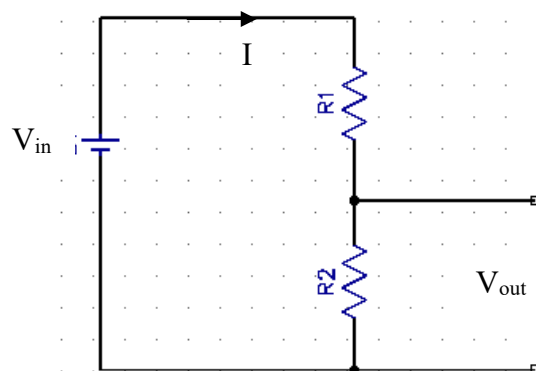


Fig.5 The potential divider network

05/10/2020

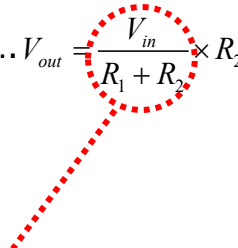
The supply voltage V_{in} will cause a current to flow in the two series connected resistors, R_1 & R_2 .

where (using Ohms law) the total current $I = \frac{V_{in}}{R_1 + R_2}$

The voltage across R_2 (we can call V_{out}) is equal to $I \times R_2$

(again just using Ohm's law)

So..... $V_{out} = \frac{V_{in}}{R_1 + R_2} \times R_2$



....remember, this part is equal to I

Similarly, if you want to make the voltage V_{out} to be across R_1 , the equation becomes:

$$V_{out} = \frac{V_{in}}{R_1 + R_2} \times R_1$$

Calculations with Capacitors

The value of a capacitor determines how much charge it will store for a given potential difference.

$$C(\text{Farads}) = \frac{Q(\text{coulombs})}{V(\text{volts})}$$

Capacitors with the same value

If you have 'n' capacitors in series, each with capacitance C, the total capacitance is given by $C_T = C/n$

Capacitors in series

$$\frac{1}{C_T} = \frac{1}{C_1} + \frac{1}{C_2} + \frac{1}{C_3} + \dots + \frac{1}{C_n}$$

Two capacitors in series 'product over sum' rule

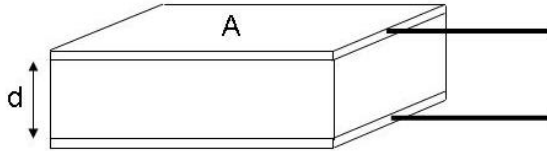
$$C_T = \frac{C_1 \times C_2}{C_1 + C_2}$$

Capacitors in parallel

$$C_T = C_1 + C_2 + C_3 + \dots + C_n$$

Relationship between area, distance between plates and dielectric constant

$$C = \frac{kA}{d} \quad \text{where } k = \epsilon_0 \epsilon_r$$



Q20. A capacitor is formed by two parallel plates. What should be done to make the capacitance four times greater?

- A) Double the area of the plates and double the distance between them
- B) Double the area of the plates and halve the distance between them
- C) Halve the area of the plates and halve the distance between them
- D) Halve the area of the plates and double the distance between them

Answer:

'A' is wrong since you are not changing the ratio

'B' looks good since the ratio is now 4:1

'C' is wrong as the ratio has not changed

'D' is wrong, the capacitor will become smaller

Q21. What is the total capacitance of the two capacitors $C_1=60\text{pF}$ and $C_2=120\text{pF}$, connected in series as below?

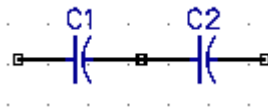


Fig.6 Capacitors in series

$$\frac{1}{C_T} = \frac{1}{60 \times 10^{-12}} + \frac{1}{120 \times 10^{-12}}$$

$$\frac{1}{C_T} = 1.66 \times 10^{10} + 8.33 \times 10^9$$

$$\frac{1}{C_T} = 2.5 \times 10^{10}$$

$$C_T = \frac{1}{2.5 \times 10^{10}}$$

$$C_T = 40 \times 10^{-12} (40 \text{ pF})$$

Key sequence is:

60
X10^x
(-)
12
X⁻¹
+
120
X10^x
(-)
12
X⁻¹
=2.5x10¹⁰
X⁻¹
=
4x10⁻¹¹

05/10/2020

NB For two capacitors in series you can use the product over sum rule!

Q21 answer again!

$$C_T = \frac{C_1 \times C_2}{C_1 + C_2}$$

$$C_T = \frac{60 \times 120}{60 + 120}$$

$$C_T = \frac{7200}{180}$$

$$C_T = 40(pF)$$

There is no need to add the engineering notation in the calculations as both capacitors are in pF, so be aware of these simple approaches.

Q22. What is the total capacitance of C1=60pF and C2=120pF in parallel?

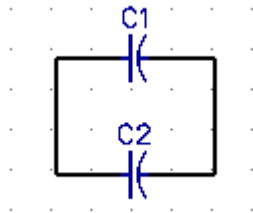


Fig.7 Capacitors in parallel

$$C_T = C_1 + C_2$$

$$C_T = 60 \times 10^{-12} + 120 \times 10^{-12}$$

$$C_T = 180 \times 10^{-12}$$

$$C_T = 180 pF$$

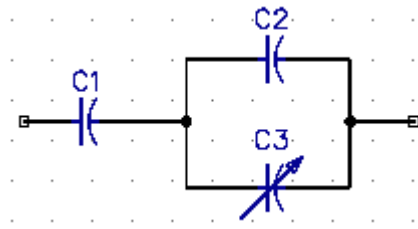
Key sequence is:

60
X10^x
(-)
12
+
120
X10^x
(-)
12
=1.8x10⁻¹⁰

ENG gives 180x10⁻¹²
(180pF)

05/10/2020

Q23. In the circuit below, $C_1 = 120\text{pF}$, $C_2 = 20\text{pF}$ and $C_3 = 20\text{--}120\text{pF}$. Over what range will the total capacitance vary?



The 'product over sum' rule is very effective here. First take a look at the parallel section. The starting point will be two 20pF capacitors in parallel, so these simply add to form a 40pF capacitor, so now we have a 120pF and a 40pF in series. Now use the product over sum rule to calculate the total value.

$$C_T = \frac{C_1 \times C_2}{C_1 + C_2}$$

$$C_T = \frac{120 \times 40}{120 + 40}$$

$$C_T = \frac{4800}{160}$$

$$C_T = 30(\text{pF})$$

At the other end of the tuning range we have a parallel combination of 20pF in parallel with 120pF , which results in a total of 140pF . So the total is 140pF in parallel with 120pF .

Again use the 'product over sum' rule to calculate the total capacitance.

$$C_T = \frac{C_1 \times C_2}{C_1 + C_2}$$

$$C_T = \frac{120 \times 140}{120 + 140}$$

$$C_T = \frac{16800}{260}$$

$$C_T = 64(\text{pF})$$

So the total range is $30\text{--}64\text{pF}$.

Charging & discharging a capacitor through a resistor

The capacitor is considered fully charged after 5 time constants, or 5τ

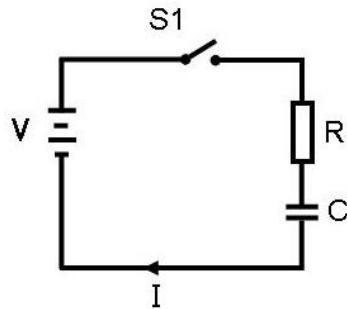


Fig.8 Capacitor charge & discharge

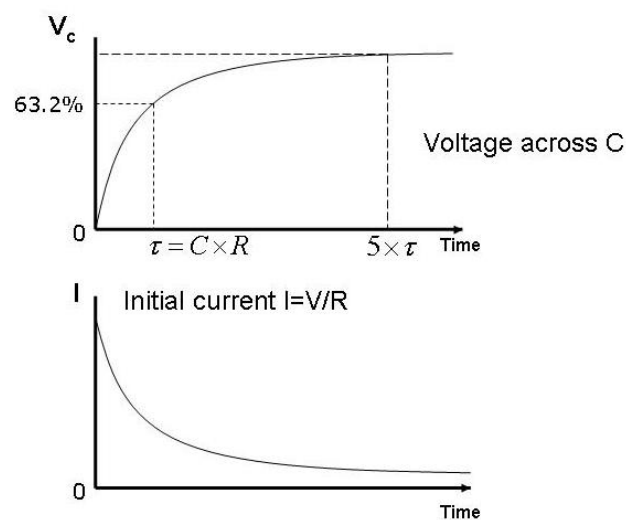


Fig.9 Capacitor charge & discharge curves

Time $T=0$ (at the bottom left corner of the graph), represents the time of the closure of switch $S1$, which allows current to flow through the resistor to the capacitor. After one time constant (τ), the voltage across the capacitor is 63.2% of maximum and after 5 time constants, the capacitor is fully charged.

Charging a capacitor through a resistor

$$\tau = C \times R$$

Where τ is the time constant (in seconds)

Q24. What is the time constant if the resistor is $47\mu\text{F}$ and the 'limiting' resistor is $33\text{k}\Omega$?

$$\tau = C \times R$$

$$\tau = 47 \times 10^{-6} \times 33 \times 10^3$$

$$\tau = 1.55\text{s}$$

Key sequence is:

47
X10^x
(-)
6
x
47
X10^x
3
=1.55s

Q25. How long would it take to fully charge the capacitor in Q24?

$$\text{Answer: } 5 \times \tau = 5 \times 1.55 = 7.75\text{s}$$

Q26. A $22\mu\text{F}$ capacitor is being charged via a 47Ω resistor. The supply voltage is 24 volts, how long would it take for the voltage across the capacitor to reach 15volts?

Answer:

15 volts is 63% of 24, ($15/24 = 0.63$) so this is equal to 1 time constant. So, we need to calculate the time constant and that is our answer!

$$\tau = 22 \times 10^{-6} \times 47$$

$$\tau = 1.034 \times 10^{-3}$$

$$\tau = 1\text{ms}$$

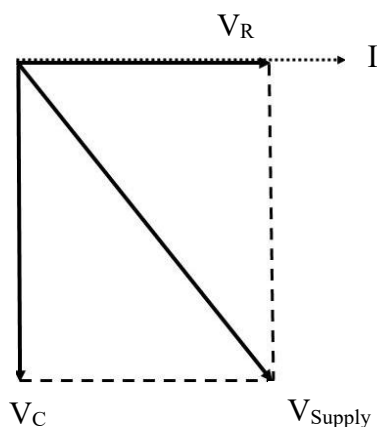
Key sequence is:

22
X10^x
(-)
6
x
47
=1.034x10⁻³

Approx 1ms

Resistor & capacitor in series

Adding voltages in a series circuit requires vector addition, since the voltages across R and C are 90° from each other.



When the circuit is supplied with an a.c. supply the voltage across the resistor is in phase with the current and it can be calculated simply, using Ohms Law. The voltage across the capacitor lags the current by 90° and is calculated using $V = I \times X_C$

The current I is common to both R and C and is treated as the reference vector. The voltage across the resistor is in phase with the current, so the voltage vector is drawn parallel to the current vector.

The voltage across the capacitor lags the current by 90° and is drawn downwards. The vector addition of V_C and V_R is equal to the supply voltage.

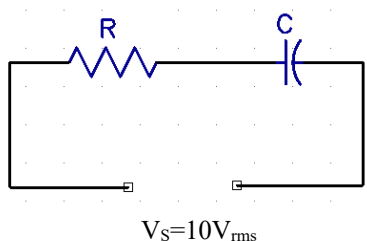
Fig.10 Vector addition of V_R and V_C

Using the Pythagoras theorem we can conclude that:

$$V_{Supply} = \sqrt{V_R^2 + V_C^2}$$

Given any two parameters we can then re-arrange the formula to find the missing one.

Q27. In a series RC circuit with a supply voltage of 10V_{rms}, if the voltage across R=6.855V what is the voltage across the capacitor C?



$$\begin{aligned} V_S &= \sqrt{V_R^2 + V_C^2} \\ V_S^2 &= V_R^2 + V_C^2 \\ V_S^2 - V_R^2 &= V_C^2 \\ V_C &= \sqrt{V_S^2 - V_R^2} \\ V_C &= \sqrt{10^2 - 6.855^2} \\ V_C &= \sqrt{100 - 47} \\ V_C &= \sqrt{53} \\ V_C &= 7.28V_{rms} \end{aligned}$$

Key sequence is:

```
√
10
X²
-
6.855
X²
= 7.28
```

Resistor & inductor in series

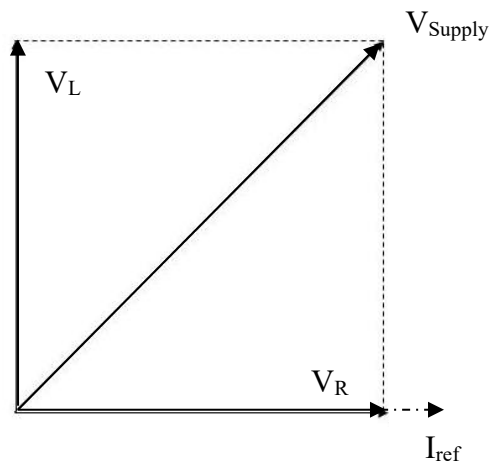
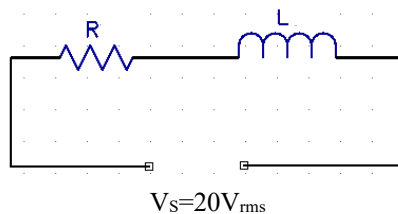


Fig.11 Vector addition of V_R and V_L

The voltage across an inductor leads the current by 90° , this is shown in Fig 11.

In this case $V_{Supply} = \sqrt{V_R^2 + V_L^2}$ which is similar in approach to the series RC circuit.

Q28. In a series RL circuit with a supply voltage of $20V_{rms}$, if the voltage across the resistor R is $8.75V$, what is the voltage across the capacitor?



$$V_S = \sqrt{V_R^2 + V_L^2}$$

$$V_S^2 = V_R^2 + V_L^2$$

$$V_L^2 = V_S^2 - V_R^2$$

$$V_L = \sqrt{V_S^2 - V_R^2}$$

$$V_L = \sqrt{20^2 - 8.75^2}$$

$$V_L = \sqrt{400 - 76.56}$$

$$V_L = \sqrt{323.44}$$

$$V_L = 17.98V_{rms}$$

Key sequence is:

√

20

X²

-

8.75

X²

= 17.98

Inductors in series

$$L_T = L_1 + L_2 + L_3 + \dots L_n$$

Inductors in parallel

$$\frac{1}{L_T} = \frac{1}{L_1} + \frac{1}{L_2} + \frac{1}{L_3} + \dots \frac{1}{L_n}$$

For two inductors in parallel you can also use the product over sum rule.

$$L_T = \frac{L_1 \times L_2}{L_1 + L_2}$$

Time constant of circuit containing inductance and resistance

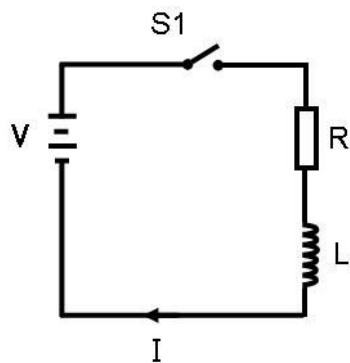


Fig.12 Inductor charge circuit

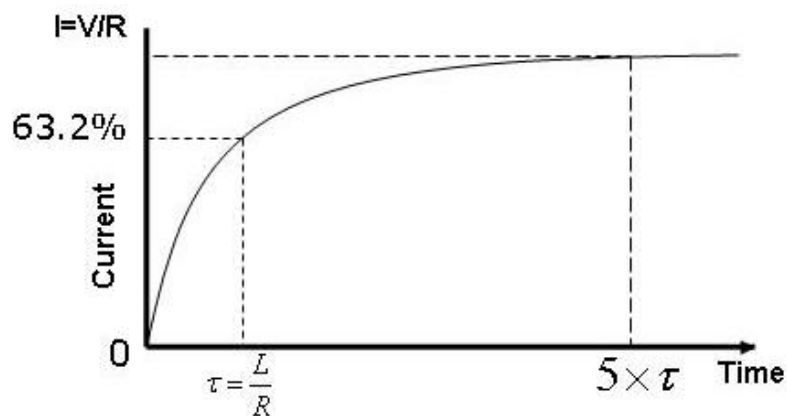


Fig.13 Inductor charge curve

Q29. A circuit consisting of an inductor and resistor in series has a time constant of 15ms (milliseconds). After voltage is applied how long will it take to achieve the final value of current?

Answer: 5 time constants = $5 \times 15\text{ms} = 75\text{ms}$.

Alternating currents and voltages

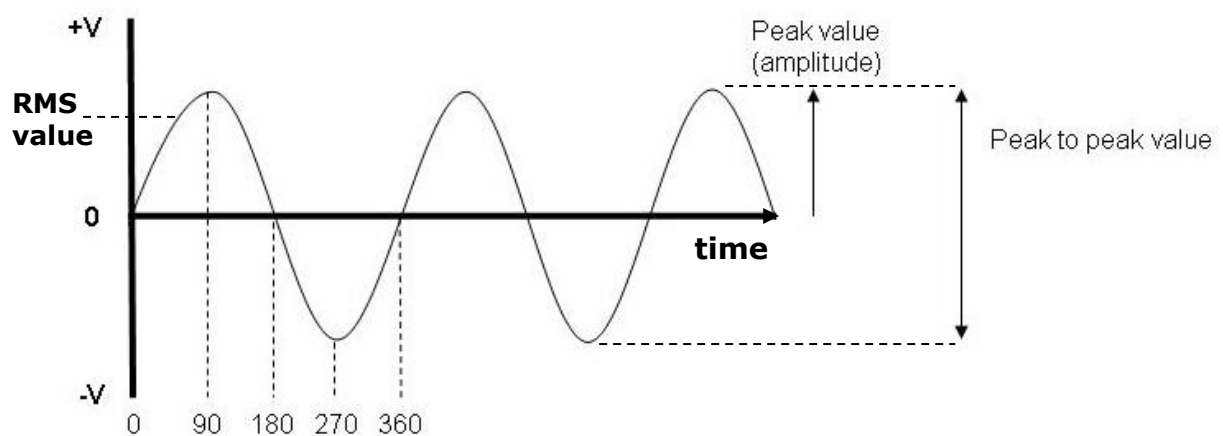


Fig.14 The sinusoidal waveform (sine wave)

90° represents 1/4 cycle
180° represents 1/2 cycle
270° represents 3/4 cycle
360° represents 1 full cycle

The frequency f is the number of complete cycles per second, where 1 cycle per second = 1Hertz (Hz).

The period T is the time taken to complete one cycle.

These two parameters are linked by the formulas: $T=1/f$ and $f=1/T$

The peak value is not the one that you measure with your digital multi-meter; the meter measures the RMS or root mean square value.

This RMS value of the voltage of the sine wave is equivalent to the DC voltage that would have the same heating effect, or the same overall rate of energy conversion, or work done.

Again, there is a relationship between RMS and peak voltage:

05/10/2020

$$V_{rms} = \frac{V_{peak}}{\sqrt{2}} \quad \text{or} \quad 0.707 \times V_{peak}$$

There is usually an exam question that will ask you to convert from peak to RMS values.

Q30. An alternating current in the form of a sine wave has a peak value of 24V, what is its RMS value?

$$V_{rms} = 0.707 \times V_{peak}$$

$$V_{rms} = 0.707 \times 24$$

$$V_{rms} = 17 \text{volts}$$

Q31. If an RMS voltage has a value of 15volts, what is its peak value?

Now we must transpose the formula for the original formula
RMS value, to make 'V_{peak}' the subject.

$$V_{rms} = 0.707 \times V_{peak}$$

Divide both sides of the equation by 0.707

$$\frac{V_{rms}}{0.707} = \frac{\cancel{0.707} \times V_{peak}}{\cancel{0.707}}$$

$$\frac{V_{rms}}{0.707} = V_{peak}$$

These two then cancel out

So for an RMS value of 15volts

$$V_{peak} = \frac{V_{rms}}{0.707}$$

$$V_{peak} = \frac{15}{0.707}$$

$$V_{peak} = 21.2 \text{volts}$$

Q32. If the time for one complete cycle is 0.0002 ms (milliseconds), what is the frequency?

$$f = \frac{1}{T}$$

$$f = \frac{1}{0.0002 \times 10^{-3}}$$

$$f = 5 \times 10^6 \text{ Hz}$$

$$f = 5 \text{ MHz}$$

Key sequence is:

0.0002

X10^x

(-)

3

X⁻¹

=5x10⁶

(5MHz)

Q33. What is the time period of a 3.5MHz signal?

$$T = \frac{1}{f}$$

$$T = \frac{1}{3.5 \times 10^6}$$

$$T = 285 \times 10^{-9}$$

$$T = 285 \text{ ns}$$

Key sequence is:

3.5
X10^x
6
X⁻¹
=285x10⁻⁹
(285nS)

Q34. What is the wavelength λ of an RF transmission of frequency 52 MHz?

The relationship between frequency and wavelength is given by $\lambda = v/f$, where v = the velocity of light in free space (vacuum). Generally quoted as c (special case) $= 3 \times 10^8$ m/s.

now, $c = 3 \times 10^8$ m/s. is the same as $c = 300 \times 10^6$ m/s so if we now change the equation to: $\lambda = 300/f$, where the frequency is in MHz, this makes the conversion easier since the 10^6 parts of v and f now cancel out!

$$\lambda = \frac{v}{f}$$

$$\lambda = \frac{300 \times \cancel{10^6}}{52 \times \cancel{10^6}}$$

$$\lambda = \frac{300}{52}$$

$$\lambda = 5.77 \text{ m}$$

Capacitive reactance

$$X_c = \frac{1}{2\pi fC}$$

Where f is frequency in Hz and C is capacitance in Farads

Q35. A $5\mu\text{F}$ capacitor is connected across the 240V 50Hz mains supply. What is the reactance at that frequency and how much current will flow?

$$X_c = \frac{1}{2\pi fC}$$

$$X_c = \frac{1}{2 \times 3.14 \times 50 \times 5 \times 10^{-6}}$$

$$X_c = \frac{1}{1.57 \times 10^{-3}}$$

$$X_c = 637 \Omega$$

Key sequence is:

2
X
3.14
X
50
5
x
X10^x
(-)
6
X⁻¹
=637 Ω

We can now use Ohm's law to calculate the current,

$$I = \frac{V}{X_c} \quad \text{where}$$

$$I = \frac{240}{637}$$

$$I = 0.377 \text{ A(RMS)}$$

Q36. At what frequency would a 22nF capacitor have a reactance of 50Ω?

$$X_c = \frac{1}{2\pi fC}$$

$$fX_c = \frac{1}{2\pi C} \times \cancel{f} \quad \text{Multiply both sides by } f$$

$$fX_c = \frac{1}{2\pi C}$$

$$\frac{\cancel{f}X_c}{\cancel{X_c}} = \frac{1}{2\pi CX_c} \quad \text{Divide both sides by } X_c$$

$$f = \frac{1}{2\pi CX_c}$$

To simplify the process, if it is on the numerator on the LHS it goes to the denominator on the RHS, so simply swap places with the f and X_c.

So putting the numbers in:

$$f = \frac{1}{2\pi CX_c}$$

$$f = \frac{1}{2 \times 3.14 \times 22 \times 10^{-9} \times 50}$$

$$f = 145\text{kHz}$$

Key sequence is:

2
X
3.14
X
22
X10^x
(-)
9
X
50
X⁻¹
=144759
=145kHz

Q37. What capacitance would be required to give a reactance of 750Ω at a frequency of 50kHz?

$$X_c = \frac{1}{2\pi fC}$$

$$C = \frac{1}{2\pi fX_c}$$

$$C = \frac{1}{2 \times 3.14 \times 50 \times 10^3 \times 750}$$

$$C = 4.25 \times 10^{-9}$$

$$C = 4.25\text{nF}$$

Key sequence is:

2
X
3.14
X
50
X10^x
3
X
750
X⁻¹
=4.25x10⁻⁹
=4.25nF

NB. C and X_c swap places this time.

Inductive reactance

$$X_L = 2\pi fL$$

Q38. An inductor of value 22mH is operating at a frequency of 28.5MHz, what is its reactance?

$$X_L = 2\pi fL$$

$$X_L = 2 \times 3.14 \times 28.5 \times 10^6 \times 22 \times 10^{-3}$$

$$X_L = 3.93M\Omega$$

Key sequence is:

2
X
3.14
X
28.5
X10^x
6
X
22
X10^x
(-)
3
X⁻¹
=3.93x10⁶
=3.93MΩ

Q39. At what frequency would a 22mH inductor have a reactance of 500Ω?

$$X_L = 2\pi fL$$

$$f = \frac{X_L}{2\pi L}$$

$$f = \frac{500}{2 \times 3.14 \times 22 \times 10^{-3}}$$

$$f = 3.618 \times 10^3$$

$$f = 3.618kHz$$

Key sequence is:

500
÷
(
2
X
3.14
X
22
X10^x
(-)
3
)
=3.618x10³
=3.618kHz

Q40. What inductance would be required to give a reactance of 750Ω at a frequency of 50kHz?

$$X_L = 2\pi fL$$

$$L = \frac{X_L}{2\pi f}$$

$$L = \frac{750}{2 \times 3.14 \times 50 \times 10^3}$$

$$L = 2.39mH$$

Key sequence is:

750
÷
(
2
X
3.14
X
50
X10^x
3
)
=2.39x10⁻³
=2.39mH

Impedance

$$Z = \sqrt{R^2 + X^2}$$

Q41. A resistor of 200Ω and a capacitor of 47nF are fed from an AC source. At a certain frequency the reactance of the capacitor is 20Ω , what is the impedance of the circuit at that frequency?

$$Z = \sqrt{R^2 + X^2}$$

$$Z = \sqrt{200^2 + 20^2}$$

$$Z = \sqrt{40000 + 400}$$

$$Z = \sqrt{40400}$$

$$Z = 201\Omega$$

Key sequence is:

200

\times^2

+

20

\times^2

=40400

$\sqrt{}$

=201

Q42. A resistor of 470Ω and a capacitor of 180pF are fed from an a.c. source of 14MHz . What is the impedance of the circuit at that frequency?

We first need to find the capacitive reactance X_C

$$X_C = \frac{1}{2\pi fC}$$

$$X_C = \frac{1}{2 \times 3.14 \times 14 \times 10^6 \times 180 \times 10^{-12}}$$

$$X_C = \frac{1}{15.82 \times 10^{-3}}$$

$$X_C = 63\Omega$$

Now we can put this into the formula for impedance Z :

$$Z = \sqrt{R^2 + X_C^2}$$

$$Z = \sqrt{470^2 + 63^2}$$

$$Z = \sqrt{220900 + 3969}$$

$$Z = 474\Omega$$

Q43. A resistor of 470Ω and an inductor of $180\mu\text{H}$ are fed from an AC source of 14MHz . What is the impedance of the circuit at that frequency?

We first need to find the inductive reactance X_L

$$X_L = 2\pi fL$$

$$X_L = 2 \times 3.14 \times 14 \times 10^6 \times 180 \times 10^{-6}$$

$$X_L = 15.8 \times 10^3$$

$$X_L = 15.8\text{k}\Omega$$

Now we can put this into the formula for impedance Z:

$$\begin{aligned}
 Z &= \sqrt{R^2 + X_L^2} \\
 Z &= \sqrt{470^2 + (15.8 \times 10^3)^2} \\
 Z &= \sqrt{220900 + 249 \times 10^6} \\
 Z &= \sqrt{249.2 \times 10^6} \\
 Z &= 15.78 \times 10^3 \\
 Z &= 15.78 k\Omega
 \end{aligned}$$

This value is very close to that of X_C which is no surprise, because it is so large when added as a vector with R (which is small).

Resonant Frequency

$$f_r = \frac{1}{2\pi\sqrt{LC}}$$

Q44. A circuit consists of an inductance of 33mH in parallel with a 50pF capacitor, what is the resulting resonant frequency?

$$\begin{aligned}
 f_r &= \frac{1}{2\pi\sqrt{LC}} \\
 f_r &= \frac{1}{2 \times 3.14 \sqrt{33 \times 10^{-3} \times 50 \times 10^{-12}}} \\
 f_r &= \frac{1}{6.28 \sqrt{1.65 \times 10^{-12}}} \\
 f_r &= \frac{1}{6.28 \times 1.285 \times 10^{-6}} \\
 f_r &= \frac{1}{8.1 \times 10^{-6}} \\
 f_r &= 123 \times 10^3 \\
 f_r &= 123 kHz
 \end{aligned}$$

Key sequence is:

2
 X
 3.14
 X
 √
 33
 X10^x
 (-)
 3
 X
 50
 X10^x
 (-)
 12
 = gives 8.1 X10⁻⁶
 X⁻¹ gives 123456
 ENG gives 123.45 X10³
 (123kHz)

Q45. At 14MHz an antenna presents an inductive reactance at its feed-point equivalent to an inductor of 42μH. What value of capacitance is required to make the antenna resonant?

First we need to use the above formula but transposed to make C the Subject:

$$C = \frac{1}{4\pi^2 f_r^2 L}$$

NB An explanation of this transposition is in Appendix A.

$$C = \frac{1}{4\pi^2 f_r^2 L} \quad \text{Answer:}$$

$$C = \frac{1}{4 \times 3.14^2 \times (14 \times 10^6)^2 \times 42 \times 10^{-6}}$$

$$C = \frac{1}{39.438 \times 1.96 \times 10^{14} \times 42 \times 10^{-6}}$$

$$C = \frac{1}{324 \times 10^9}$$

$$C = 3.08 \times 10^{-12}$$

$$C = 3 \text{ pF}$$

Key sequence is:

```
4
X
3.14
X^2
(
14
X10^x
6
)
X^2
X
42
X10^x
(-)
6
= gives 3.24 X10^11
X^-1 gives 3.08 X10^-12
(3pF)
```

Q46. At 3.5MHz an antenna presents a capacitive reactance at its feed-point equivalent to a capacitor of 47pF. What value of inductance is required to make the antenna resonant?

$$L = \frac{1}{4\pi^2 f_r^2 C}$$

$$L = \frac{1}{4 \times 3.14^2 \times (3.5 \times 10^6)^2 \times 47 \times 10^{-12}}$$

$$L = \frac{1}{39.438 \times 1.225 \times 10^{13} \times 47 \times 10^{-12}}$$

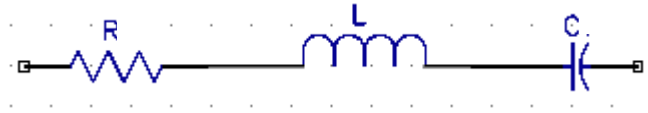
$$L = \frac{1}{22.7 \times 10^3}$$

$$L = 44 \times 10^{-6}$$

$$L = 44 \mu\text{H}$$

Key sequence is:

```
4
X
3.14
X^2
(
3.5
X10^x
6
)
X^2
X
47
X10^x
(-)
12
= gives 22706
X^-1 gives 4.4 X10^-5
ENG gives 44 X10^-6
(44μH)
```

Series RLC Circuit example

An RLC circuit where $R=10\text{k}\Omega$, $L=246\text{mH}$ and $C=5\text{nF}$

Q47. What is the total impedance of the circuit at resonance?

At resonance, the reactive components X_C & X_L cancel out to leave the resistive component R only so the impedance will be $10\text{k}\Omega$.

Q48. If the source voltage is 36V what will be the voltage across R , L and C at resonance?

At resonance, the voltage across R is the applied voltage V .

Current through the resistor is $I_R = V/R$. This current flows through both the capacitor and the inductor.

$$\begin{aligned}\text{So the voltage across the capacitor } V_C &= \frac{V}{R} \times \sqrt{\frac{L}{C}} \\ V_C &= \frac{36}{10 \times 10^3} \times \sqrt{\frac{246 \times 10^{-3}}{5 \times 10^{-9}}} \\ V_C &= 3.6 \times 10^{-3} \times 7014 \\ V_C &= 25.25\text{V}\end{aligned}$$

This same voltage is across the inductor but 180° out of phase with the voltage across the capacitor so cancels out.

Q49. What is the resonant frequency of the circuit?

$$\begin{aligned}f_r &= \frac{1}{2\pi\sqrt{LC}} \\ f_r &= \frac{1}{2 \times 3.14 \times \sqrt{246 \times 10^{-3} \times 5 \times 10^{-9}}} \\ f_r &= \frac{1}{6.28 \times \sqrt{1.23 \times 10^{-9}}} \\ f_r &= \frac{1}{6.28 \times \sqrt{1.23 \times 10^{-9}}} \\ f_r &= 4540\text{Hz} \\ f_r &= 4.54\text{kHz}\end{aligned}$$

Key sequence is:

2
X
3.14
X
√
246
X10^x
(-)
3
X
5
X10^x
(-)
9
= (2.2x10⁻⁴)
X⁻¹
=
4540
(4.54kHz)

Q50. What is the Q factor of the circuit?

$$Q = \frac{2\pi fL}{R}$$

$$Q = \frac{2 \times 3.14 \times 4540 \times 246 \times 10^{-3}}{10 \times 10^3}$$

$$Q = \frac{7014}{10 \times 10^3}$$

$$Q = 0.7$$

Dynamic impedance/resistance

For a parallel LC circuit at resonance, the reactive components cancel and we are left with a resistive component R_D only, where $R_D = L/CR$

Q51. What is the impedance at resonance of a parallel tuned circuit comprising a capacitor of 47pF and a coil of 22μH with an internal resistance of 12Ω?

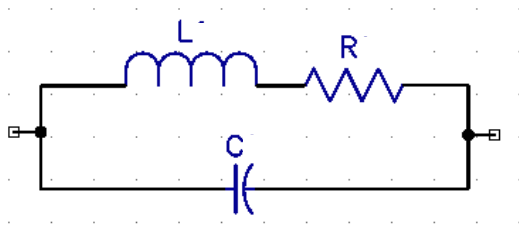


Fig.13 Parallel tuned circuit

$$R_D = \frac{L}{CR}$$

$$R_D = \frac{22 \times 10^{-6}}{(47 \times 10^{-12} \times 12)}$$

$$R_D = \frac{22 \times 10^{-6}}{5.64 \times 10^{-10}}$$

$$R_D = 39 \times 10^3$$

$$R_D = 39k\Omega$$

Key sequence

is:

22

X10^x

(-)

6

÷

(

47

X10^x

(-)

12

)

X

12

=39007

ENG

39 X 10³

Transformer Ratios

$$V_s = V_p \frac{N_s}{N_p}$$

$$I_p = I_s \frac{N_s}{N_p}$$

$$Z_p = Z_s \left(\frac{N_p}{N_s} \right)^2$$

Q52. A transformer has 200 turns on the secondary coil and 600 turns on the primary coil. A voltage of 300VAC is applied across the primary coil, what is the output voltage across the secondary coil?

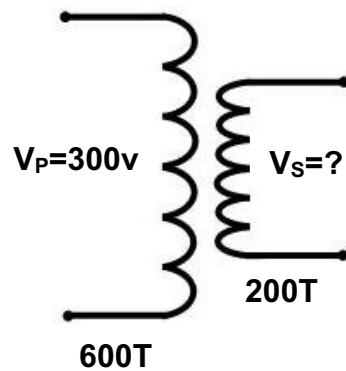


Fig.14 Transformer ratios

$$V_s = V_p \times \frac{N_s}{N_p}$$

$$V_s = 300 \times \frac{200}{600}$$

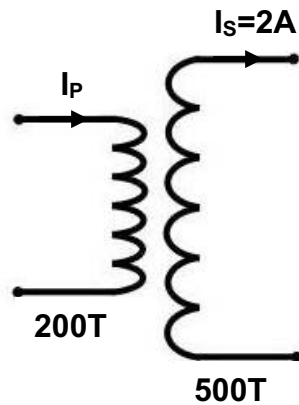
$$V_s = 300 \times \frac{1}{3}$$

$$V_s = 100 \text{ volts}$$

Key sequence is:

```
300
X
(
200
÷
600
)
=100
```

Q53. A transformer has 500 turns on the secondary coil and 200 turns on the primary coil. The current in the secondary coil, $I_s = 2A$, what is the value of the primary coil current I_p ?



$$I_p = I_s \times \frac{N_s}{N_p}$$

$$I_p = 2 \times \frac{500}{200}$$

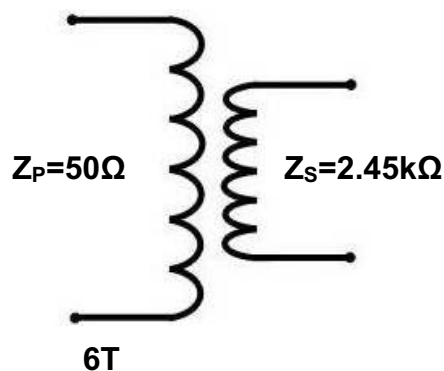
$$I_p = 5A$$

Key sequence is:

2
X
(
500
÷
200
)
=5

Q54. An amplifier requires a load impedance of $2.45k\ \Omega$, which needs to be matched to a $50\ \Omega$ output. If the secondary has 6 turns, how many turns should there be on the secondary to give $Z_p = 50\text{ohms}$ and $Z_s = 2.45k\text{ohms}$?

Here, we need to transpose for N_p (all the steps are left in for clarity)



$$Z_P = Z_S \left(\frac{N_P}{N_S} \right)^2$$

Divide both sides by Z_S

$$\frac{Z_P}{Z_S} = \frac{\cancel{Z_S} \left(\frac{N_P}{N_S} \right)^2}{\cancel{Z_S}}$$

The Z_S s cancel out to leave

$$\frac{Z_P}{Z_S} = \left(\frac{N_P}{N_S} \right)^2$$

$$\sqrt{\frac{Z_P}{Z_S}} = \sqrt{\left(\frac{N_P}{N_S} \right)^2}$$

To get rid of the square, square root both sides

$$\sqrt{\frac{Z_P}{Z_S}} = \frac{N_P}{N_S}$$

$$\sqrt{\frac{Z_P}{Z_S}} \times N_S = \frac{N_P}{\cancel{N_S}} \times \cancel{N_S}$$

To 'isolate' N_P multiply both sides by N_S

$$\sqrt{\frac{Z_P}{Z_S}} \times N_S = N_P$$

And finally, put the numbers in!

$$\sqrt{\frac{2450}{50}} \times 6 = 42 \text{ turns}$$

The Decibel

The decibel is widely used in RF engineering as it makes relative measurements easy. Specifically, the decibel is a ratio. For Foundation and Intermediate courses, the examples used simply necessitate the use of the '3 & 10' rule only. For example, every time you double the power, you are increasing the power by 3dB and every time you multiply the power by 10, you are increasing by 10dB, also, every -3dB halves the figure and -10dB is a tenth, from this, most simple examples can be determined by mental arithmetic.

As a reminder:

Gain (dB)	Power multiplication
3	Two times 2X
6	Four times 2X2=4
9	Eight times 2X2X2=8
10	Ten times 10X
16 (10+3+3)	Forty times 10X2X2=40
7 (10-3)	Five times 10X0.5=5

The basic formula is: $Gain(loss) = 10 \log_{10} \left(\frac{Power_{out}}{Power_{in}} \right) dB$

So, in practice a negative number such -5.6dB is considered a loss and a positive number such as 4dB is considered a gain, (we do not normally use +4dB, the + sign is omitted and the number is assumed to be positive).

For the Advanced exam however, you will be required to use the formula so in the following pages you will see a few examples.

Effective Radiated Power – ERP

ERP = Power X Gain (linear)

Q55. What is the gain of an antenna (in decibels), of the effective radiated power is 50W when an input of 25W is applied?

$$Gain = 10 \log_{10} \left(\frac{P_{out}}{P_{in}} \right)$$

$$Gain = 10 \log_{10} \left(\frac{50}{25} \right)$$

$$Gain = 10 \log_{10} 2$$

$$Gain = 10 \times 0.3$$

$$Gain = 3dB$$

Key sequence is:

log
50
÷
25
=0.3
×10
=3

This represents a gain of X2 i.e. 50watts effective power output, for an input of 25watts.

05/10/2020

Q56. An antenna for 2m has a gain of 8dB and is fed with an RF power of 25W, what is the erp?

We first need to find the linear gain equivalent to 8dB, this is simply the ratio of power out ÷ power in.

$$Gain(dB) = 10 \log_{10} \left(\frac{P_{out}}{P_{in}} \right)$$

$$\frac{P_{out}}{P_{in}} = A \log_{10} \left(\frac{gain(dB)}{10} \right)$$

$$\frac{P_{out}}{P_{in}} = A \log_{10} \left(\frac{8}{10} \right)$$

$$\frac{P_{out}}{P_{in}} = 6.3$$

Key sequence is:

Shift log

8

÷

10

=6.3

Now we can substitute this back in to the erp formula:

$$erp = power \times gain$$

$$erp = 25 \times 6.3$$

$$erp = 157.5 \text{ watts}$$

Calculating field strength

$$E = \frac{7\sqrt{erp}}{d}$$

Q57. What is the field strength at a distance of 20m from an antenna with an erp of 25 Watts?

$$E = \frac{7\sqrt{erp}}{d}$$

$$E = \frac{7\sqrt{25}}{20}$$

$$E = \frac{35}{20}$$

$$E = 1.75 \text{ V/m}$$

Key sequence is:

7

X

√

25

=35

÷

20

=1.75

05/10/2020

Q58. A 50 watt transmitter is feeding an antenna with a gain of 8dB via a coaxial feeder with a loss of 2dB. What is the field strength 30m from the antenna?

The e.r.p. from the antenna is $(8\text{dB} - 2\text{dB}) \times 50$ Watts

erp = 6dB x 50 watts *Remember that each 3dB is a doubling of the power, so:

erp = $2 \times 2 \times 50 = 200$ Watts

$$E = \frac{7\sqrt{\text{erp}}}{d}$$

$$E = \frac{7\sqrt{200}}{30}$$

$$E = \frac{7 \times 14.14}{30}$$

$$E = 3.3\text{V} / \text{m}$$

Q59. An antenna has an erp of 100 Watts, at what distance from the antenna would the field strength be 5V/m?

$$E = \frac{7\sqrt{\text{erp}}}{d}$$

$$d \times E = \frac{7\sqrt{\text{erp}}}{\cancel{d}} \times \cancel{d}$$

Multiply both sides by d, the ds on the RHS cancel to leave:

$$d \times E = 7\sqrt{\text{erp}}$$

$$\frac{d \times \cancel{E}}{\cancel{E}} = \frac{7\sqrt{\text{erp}}}{E}$$

Divide both sides by E, the Es on the LHS cancel to leave:

$$d = \frac{7\sqrt{\text{erp}}}{E}$$

$$d = \frac{7\sqrt{100}}{5}$$

Put the numbers in:

$$d = \frac{70}{5}$$

$$d = 14\text{m}$$

Calculating SWR

$$SWR = \frac{V_{\max}}{V_{\min}} = \frac{V_{\text{forward}} + V_{\text{reverse}}}{V_{\text{forward}} - V_{\text{reverse}}}$$

Q60. An RF signal of 100V is travelling in the forward direction, 15% is reflected back to the transmitter. What is the resulting VSWR

Answer:

$$SWR = \frac{V_{\text{forward}} + V_{\text{reverse}}}{V_{\text{forward}} - V_{\text{reverse}}}$$

$$SWR = \frac{100 + 15}{100 - 15}$$

$$SWR = \frac{115}{85}$$

$$SWR = 1.35 : 1$$

Q61. An antenna results in half the incident power being reflected back to the transmitter, what will the SWR be?

$$SWR = \frac{V_{\text{forward}} + V_{\text{reverse}}}{V_{\text{forward}} - V_{\text{reverse}}}$$

But, here we are dealing with 'power' so we need to develop a formula for that.

Remember that $P = \frac{V^2}{R}$ and since R will remain the same, multiply both sides of the equation by $\sqrt{}$ and we are left with $\sqrt{P} = V$

We can now rearrange the VSWR formula to a PSWR formula:

$$SWR = \frac{\sqrt{P_{\text{forward}}} + \sqrt{P_{\text{reverse}}}}{\sqrt{P_{\text{forward}}} - \sqrt{P_{\text{reverse}}}}$$

05/10/2020

Or you can simplify this to:

$$SWR = \frac{1 + \sqrt{\frac{P_{reverse}}{P_{forward}}}}{1 - \sqrt{\frac{P_{reverse}}{P_{forward}}}}$$

$$SWR = \frac{1 + \sqrt{\frac{0.5}{1}}}{1 - \sqrt{\frac{0.5}{1}}}$$

$$SWR = \frac{1 + 0.707}{1 - 0.707}$$

$$SWR = \frac{1.707}{0.293}$$

$$SWR = 5.83:1$$

Q62. If a transmission line carries 81 Watts in the forward direction and 9 Watts in the reverse direction, what is the SWR on the line?

$$SWR = \frac{\sqrt{P_{forward}} + \sqrt{P_{reverse}}}{\sqrt{P_{forward}} - \sqrt{P_{reverse}}}$$

$$SWR = \frac{\sqrt{81} + \sqrt{9}}{\sqrt{81} - \sqrt{9}}$$

$$SWR = \frac{9 + 3}{9 - 3}$$

$$SWR = \frac{12}{6} = 2:1$$

Calculating Return Loss

$$\text{Return Loss} = 10\text{Log}_{10} \frac{\text{Reflected power}}{\text{Incident power}} \quad (\text{dB})$$

Q63. If a transmitter produces 100W and 5W is reflected at the antenna, what is the return loss?

$$\text{Return Loss} = 10\text{Log}_{10} \frac{\text{Reflected power}}{\text{Incident power}}$$

$$\text{Return Loss} = 10\text{Log}_{10} \frac{5}{100}$$

$$\text{Return Loss} = 10\text{Log}_{10} 0.05$$

$$\text{Return Loss} = 10 \times 1.3 = -13\text{dB} \quad (\text{note the minus sign})$$

Q64. If an antenna exhibits a return loss of 16dB, what will be the loss measured at the transceiver if the line loss is 2.5dB?

$$\begin{aligned} (\text{Transceiver}) \text{ Return Loss} &= \text{Antenna return loss} + (2 \times \text{Line loss}) \\ &= 16\text{dB} + (2 \times 2.5) \\ &= 21\text{dB} \end{aligned}$$

Q65. An antenna exhibits a return loss of 22dB when measured in the shack, if the feeder loss is 3.5 dB what is the return loss at the antenna connection?

$$(\text{Transceiver}) \text{ Return Loss} = \text{Antenna return loss} + (2 \times \text{Line loss})$$

But here, the scenario is reversed since we are looking for antenna return loss so:

$$\begin{aligned} \text{Antenna return loss} &= (\text{Transceiver}) \text{ Return Loss} - (2 \times \text{Line loss}) \\ &= 22\text{dB} - (2 \times 3.5\text{dB}) \\ &= 15\text{dB} \end{aligned}$$

Calculating Power Gain/Loss

$$Gain(dB) = 20 \log_{10} \left(\frac{V_{out}}{V_{in}} \right)$$

$$Gain(dB) = 10 \log_{10} \left(\frac{P_{out}}{P_{in}} \right)$$

Q66. An amplifier produces 60μV from an input of 15μV, what is its power gain?

$$Gain = 20 \log_{10} \left(\frac{V_{out}}{V_{in}} \right)$$

$$Gain = 20 \log_{10} \left(\frac{60}{15} \right)$$

$$Gain = 20 \log_{10} 4$$

$$Gain = 20 \times 0.6$$

$$Gain = 12dB$$

Q67. If an amplifier has a gain of 12dB, what input voltage would be required to produce an output of 60μV?

$$Gain = 20 \log_{10} \left(\frac{V_{out}}{V_{in}} \right)$$

$$\left(\frac{V_{out}}{V_{in}} \right) = 10^{\frac{Gain(dB)}{20}}$$

$$\frac{60\mu V}{V_{in}} = 10^{\frac{12}{20}}$$

$$\frac{60\mu V}{V_{in}} = 10^{0.6}$$

$$\frac{60\mu V}{V_{in}} = 4$$

$$\frac{60\mu V}{4} = V_{in} = 15\mu V$$

Q68. An amplifier produces 50 Watts from an input of 3 Watts, what is its power gain?

$$Gain(dB) = 10 \log_{10} \left(\frac{P_{out}}{P_{in}} \right)$$

$$Gain(dB) = 10 \log_{10} \left(\frac{50}{3} \right)$$

$$Gain(dB) = 10 \times 1.22$$

$$Gain(dB) = 12.2dB$$

05/10/2020

The gain of a Yagi antenna is often quoted as “the increase in signal (in the forward direction) compared to that of a dipole”. This expressed using dBd where the last d indicates dipole.

$$\text{Gain} = \frac{\text{Power from Yagi}}{\text{Power from dipole}}$$

Or
$$\text{Gain} = 10 \log \left[\frac{\text{Power from Yagi}}{\text{Power from dipole}} \right] \quad (\text{dBd})$$

Q69. If the radiated power from a Yagi antenna is 8 times greater than that of a dipole, what is it's gain in dBd?

$$\text{Gain} = 10 \times \log 8$$

$$\text{Gain} = 10 \times 0.9$$

$$\text{Gain} = 9 \text{ dBd}$$

The dBWatt (dBW)

You will notice that your licence indicates maximum power limits using dBW, this is a good example to work through for practice in converting to the more familiar power levels.

1W	0dBW
32W	15dBW
40W	16dBW
100W	20dBW
160W	22dBW
400W	26dBW

The output powers are all with reference to 1W so for instance, if you increase 1W by 15dB you have a figure of 32W.

Determining this using the 3 & 10 rule may give us some idea:

$$1\text{W} \times 10\text{dB} = 10\text{W}, \times 3\text{dB} = 20\text{W}, \times 3\text{dB} = 40\text{W}$$

(So a total of 16dBW = 40W)

$$1\text{W} \times 10\text{dB} = 10\text{W}, \times 10\text{dB} = 100\text{W}$$

(So a total of 20dBW = 100W)

$$1\text{W} \times 10\text{dB} = 10\text{W}, \times 10\text{dB} = 100\text{W}, \times 3\text{dB} = 200\text{W}$$

(So a total of 23dBW = 200W)

$$1\text{W} \times 10\text{dB} = 10\text{W}, \times 10\text{dB} = 100\text{W}, \times 3\text{dB} = 200\text{W}, \times 3\text{dB} = 400\text{W}$$

(So a total of 26dBW = 400W)

15dBW may make you think a little, as it is not obviously a part of the 3 & 10 rule but if you consider that every time you increase by 3dB you double the power, then 15dB is simply 5 times 3dB, giving 1W x2 x2 x2 x2 x2, which is equal to x32, or in this case 32W.

05/10/2020

Q70. A transmitter has an output of 18dBW, what is the RF power?

Similar to the above example, 6 x 3db, yields $1W \times 2 \times 2 \times 2 \times 2 \times 2 \times 2 = \mathbf{64 \text{ Watts}}$

Q71. A transmitter has an output of 29dBW what is the RF power?

$1W \times 10dB = 10W$, $\times 10dB = 100W$, $\times 3dB = 200$, $\times 3dB = 400$, $\times 3dB = \mathbf{800W}$
(So a total of 29dB gives 800W)

Q72. A transmitter has an output of 4dbW what is the RF power?

$10dBW - 6dB = 4dBW$

+6dB is 3dB + 3dB which is equivalent to $2 \times 2 = \times 4$, so minus 6db equates to $\frac{1}{4}$

So $\frac{1}{4}$ of 10dBW (10W) = **2.5W**

Calculating transistor gain β

$$\beta = \frac{I_C}{I_B}$$

Q73. If a transistor has β of 150 and the base current is $80\mu A$, what is the collector current?

$$I_C = \beta \times I_B$$

$$I_C = 150 \times 80 \times 10^{-6}$$

$$I_C = 12 \times 10^{-3}$$

$$I_C = 12mA$$

Q74. If a transistor has collector current of 22ma and base current of $65\mu A$, what is the β ?

$$\beta = \frac{I_C}{I_B}$$

$$\beta = \frac{22 \times 10^{-3}}{65 \times 10^{-6}}$$

$$\beta = 338$$

Calculating Q Factor & Bandwidth

Q75. A medium wave receiver is tuned to 606 kHz and is receiving an AM signal of bandwidth 6 kHz, what would be a suitable Q factor for the tuned circuit?

$$Q = \frac{f_c}{f_u - F_L}$$

$$Q = \frac{\text{centre.frequency}}{\text{bandwidth}}$$

$$Q = \frac{606 \times 10^3}{6 \times 10^3}$$

$$Q = 101$$

Q76. In an FM transmission system the maximum audio frequency is 3 kHz, what is the bandwidth of a 5 kHz deviation signal?

$$BW = 2(AF_{\max} + \Delta f)$$

$$BW = 2(3\text{kHz} + 5\text{kHz})$$

$$BW = 16\text{kHz}$$

Feeders and Antennas

Q77. A 75Ω patch lead $\lambda/4$ long, is used for connection to an oscilloscope, the lead is terminated with a load of 50Ω , what will the impedance be at the free end?

$$Z_o^2 = Z_{in} \times Z_{out}$$

$$Z_{in} = \frac{Z_o^2}{Z_{out}}$$

$$Z_{in} = \frac{75 \times 75}{50}$$

$$Z_{in} = 112.5\Omega$$

Q78. A half wavelength of 50Ω feeder is terminated by a load of 82Ω , what will be the input impedance of the feeder?

Every half wavelength will repeat the load impedance so the input impedance will be 82Ω

Q79. To minimize interference from a 2m transmitter into a broadcast FM receiver, a $\lambda/4$ coaxial stub cut (from RG58U) for 145MHz is connected across the receiver coax down-lead, what is the physical length of the stub?

$$\lambda = \frac{300}{f(\text{MHz})}$$

$$\lambda = \frac{300}{145}$$

$$\lambda = 2.069\text{m}$$

$$\frac{\lambda}{4} = \frac{2.069}{4} = 0.517\text{m}$$

$$0.517 \times 0.67(\text{VelocityFactor}) = 0.346\text{m}(34.6\text{cm})$$

Phase locked loop

Q80. If the reference crystal for a phase locked loop is 6MHz, the fixed divider is set to 6000 and the VCO set to divide by 10108, what will the output frequency be?

$$f_{out} = f_{crystal} \times \frac{N}{A} \quad \dots\dots\dots \text{Where } N = \text{VCO divider} \\ \text{and } A = \text{Fixed divider}$$

$$f_{out} = 6 \times 10^6 \times \frac{10108}{6000}$$

$$f_{out} = 10.108 \times 10^6$$

$$f_{out} = 10.108\text{MHz}$$

Q81. What is the frequency step of the crystal in Q80, if the fixed divider is set to 60000?

$$f_{step} = \frac{f_{crystal}}{A}$$

$$f_{step} = \frac{6 \times 10^6}{60000}$$

$$f_{step} = 100\text{Hz}$$

Measurements

Oscilloscopes are widely used in RF measurements and are designed for frequencies up to 20-30MHz within the amateur market.

The oscilloscope consists of a cathode ray tube (CRT) with a grid of vertical and horizontal lines in front of it (called the graticule). Inside the CRT there is a vacuum. The electron beam emitted by the heated cathode at the rear of the tube is accelerated and focussed by one or more anodes and hits the front of the tube and produces a bright spot on the phosphorescent screen.

The beam is deflected by voltages, applied to two sets of plates within the tube. The horizontal deflection plates (X-plates) produce 'side to side' movement. These X-plates are linked to the time base that produces a saw tooth waveform. During the rising part of the sawtooth, the spot is driven at a uniform rate across the screen from left to right. On the falling part of the sawtooth, the beam returns rapidly from right to left. During this return, the spot is blanked out so nothing appears on the screen.

The time base generates the X-axis of the V/t graph

The slope of the rising part of the sawtooth varies with frequency and can be adjusted using the timebase control, marked TIME/DIV, this changes the scale of the horizontal X axis.

The fact that the screen is divided into squares, often 1cm, allows the horizontal scale to be expressed in seconds, milliseconds or microseconds per division or per cm, (s/DIV, ms/DIV & μ s/DIV).

The Y amplifier is linked to the Y plates, giving the Y or vertical axis of the V/t graph. The overall gain of the amplifier is set using the VOLTS/DIV control in order to adjust the display within the graticule for ease of interpretation. The vertical scale is usually in V/DIV or mV/DIV.

The trigger circuit is used to delay the time-base waveform, so that the same section of the waveform is displayed on the screen each time the spot moves across; the effect of this is to produce a stable waveform on the screen which is easy to read.

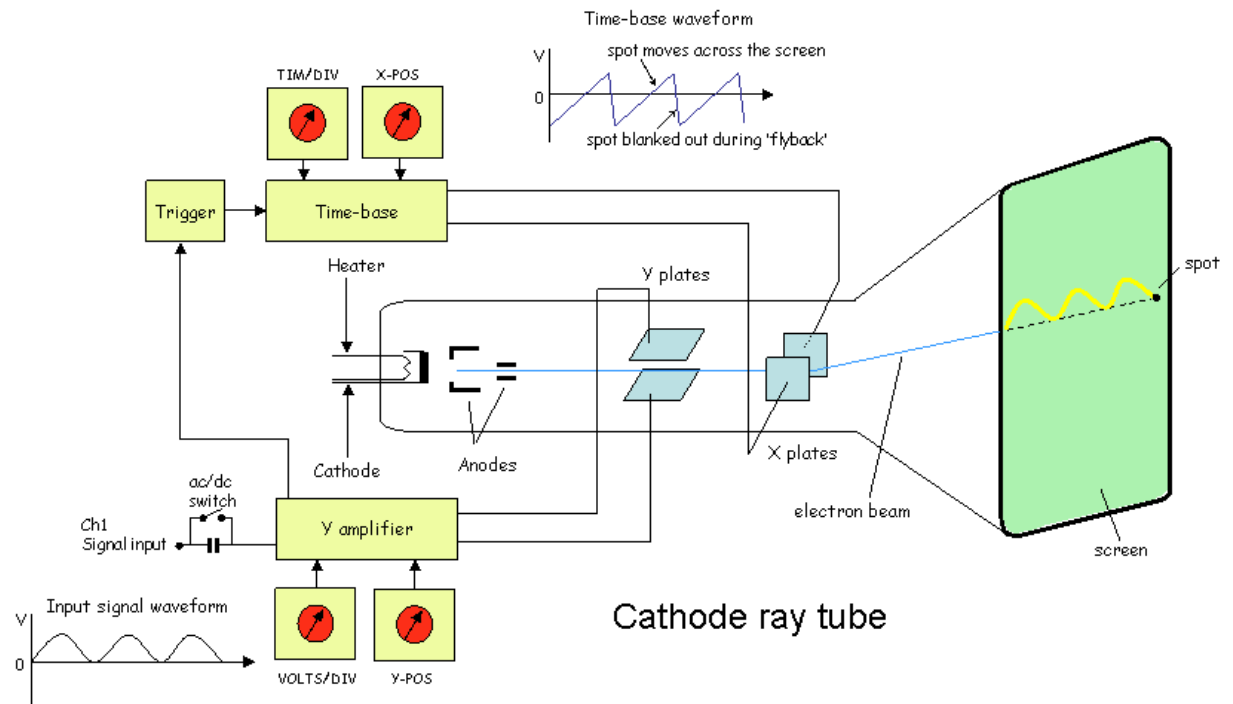
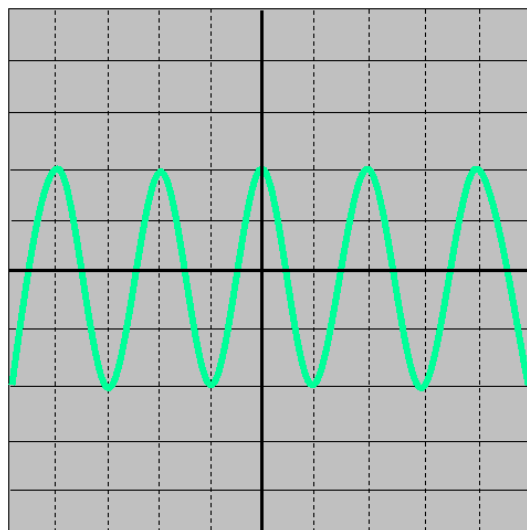


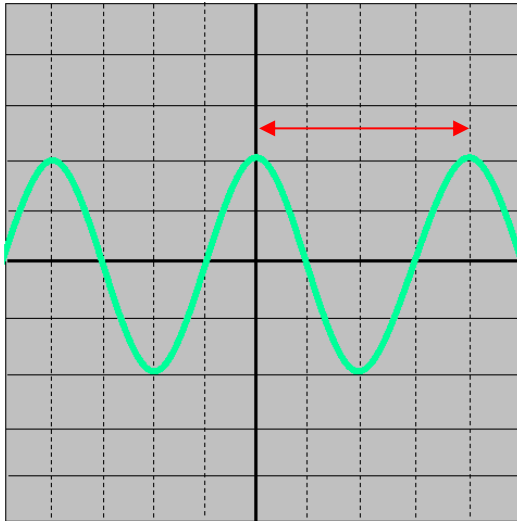
Fig.15 The oscilloscope using a cathode ray tube

Q82. When using an oscilloscope, the vertical amplifier is set to 50mV per division, what is the peak to peak voltage of the signal waveform below?



The waveform occupies 4 divisions, so
 $4 \times 50\text{mV} = 200\text{mV}$ (p-p)

Q80. If the oscilloscope timebase is set to $20\mu\text{S}/\text{cm}$, what is the frequency of the waveform?



Frequency (f) = $1/\text{period (t)}$ and on inspection we can see that one cycle occupies 4 divisions on the graticule.

$$\text{So } t = 4 \times 20\mu\text{S}$$

$$t = 80\mu\text{S}$$

And putting this into the frequency equation gives:

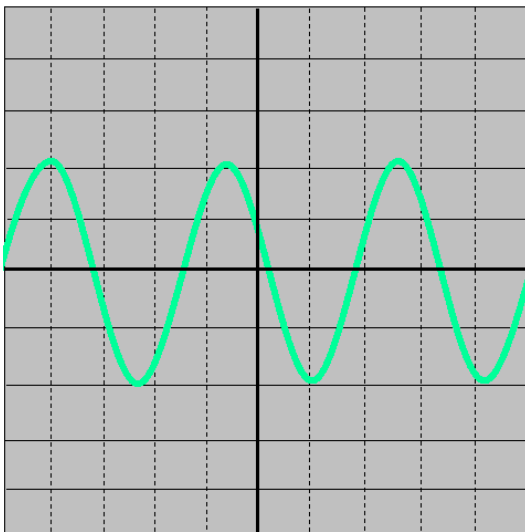
$$f = \frac{1}{t}$$

$$f = \frac{1}{80 \times 10^{-6}}$$

$$f = 125 \times 10^3$$

$$f = 125\text{kHz}$$

Q83. The oscilloscope graticule has 10 1cm divisions, in order to display three cycles of a 20kHz signal, what should the timebase be set to?



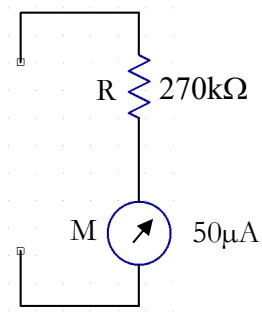
$$\text{period}(t) = \frac{1}{20 \times 10^3} = 50 \times 10^{-6} = 50\mu\text{S}$$

We wish to display 3 periods so we need $3 \times 50 = 150\mu\text{S}$ (total).

The graticule has 10 1cm divisions so $150/10 = 15\mu\text{S}$ means we need to use the $20\mu\text{S}/\text{cm}$ Time/Div setting to capture the three cycles

05/10/2020

Q84. A $270\text{k}\Omega$ resistor is connected in series with a $50\mu\text{A}$ meter movement, what will the meter read at full scale deflection?



$$V = I \times R$$

$$V = 50 \times 10^{-6} \times 270 \times 10^3$$

$$V = 13.5V$$

Key sequence is:

50

X10^x

(-)

6

X

270

X10^x

3

=13.5

Appendix A

Transposing the Resonant frequency formula for L or C

$$f_r = \frac{1}{2\pi\sqrt{LC}} \dots\dots \text{(where } f_r \text{ is the resonant frequency)}$$

Assuming we need to make L the subject of the equation on the left hand side (LHS)

Multiply both sides by \sqrt{LC}

$$\sqrt{LC} \times f_r = \frac{1 \times \cancel{\sqrt{LC}}}{2\pi \cancel{\sqrt{LC}}}$$

these cancel out, leaving:

$$\sqrt{LC} \times f_r = \frac{1}{2\pi}$$

Next, divide both sides of the equation by f_r

$$\frac{\sqrt{LC}}{\cancel{f_r}} \times \cancel{f_r} = \frac{1}{2 \times \pi \times f_r}$$

and now the f_r components cancel out on the left side of the equation to leave:

$$\sqrt{LC} = \frac{1}{2 \times \pi \times f_r}$$

To get rid of the square root we need to square it, (the square and square root cancel). Don't forget, we need to square BOTH sides of the equation!

$$(\cancel{\sqrt{LC}})^2 = \left(\frac{1}{2 \times \pi \times f_r} \right)^2$$

Then multiply out the contents of the brackets on the RHS. Since anything squared is simply multiplied by itself

05/10/2020

$$LC = \frac{1 \times 1}{2 \times 2 \times \pi \times \pi \times f_r \times f_r}$$

This now leaves us with:

$$LC = \frac{1}{4 \times \pi^2 \times f_r^2}$$

Now we need to leave L on the left and move C into the RHS of the equation by dividing both sides by C

$$\frac{\cancel{L}\cancel{C}}{\cancel{C}} = \frac{1}{4 \times \pi^2 \times f_r^2 \times C}$$

↑

Here, the Cs cancel out to leave:

$$L = \frac{1}{4 \times \pi^2 \times f_r^2 \times C}$$

If we ignore the 'X' signs we are left with:

$$L = \frac{1}{4\pi^2 f_r^2 C}$$

You can make 'C' the subject of the equation by dividing both sides of the equation by L as the final step in the process.