

# Pipe Rig Exercise

**Task:** To plan, construct, inspect, test and safely dismantle pipe rig

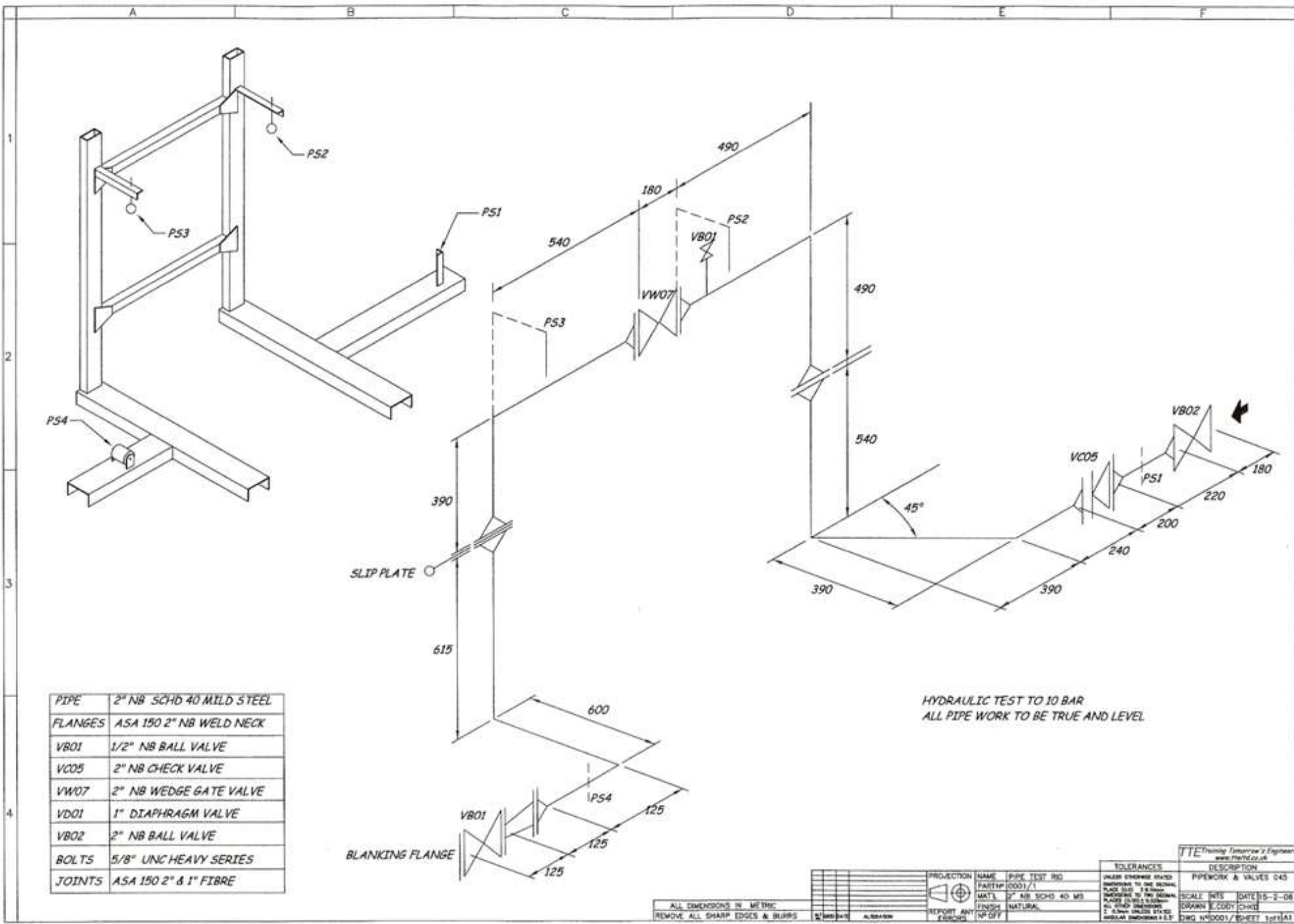
Using line diagram provided and underpinning knowledge gained from the pipe fitting course.

As a group you will be required to complete the above stated task within a specified time period.

Your work will be visually inspected and your performance observed.

You will be expected to work with the minimum of supervision and as a team.

Individually you will complete a rig assessment describing how the task was progressed, paying particular attention to any problems encountered and how they were rectified



PIPE	2" NB SCHD 40 MILD STEEL
FLANGES	ASA 150 2" NB WELD NECK
VB01	1/2" NB BALL VALVE
VC05	2" NB CHECK VALVE
VW07	2" NB WEDGE GATE VALVE
VD01	1" DIAPHRAGM VALVE
VB02	2" NB BALL VALVE
BOLTS	5/8" UNC HEAVY SERIES
JOINTS	ASA 150 2" & 1" FIBRE

HYDRAULIC TEST TO 10 BAR  
ALL PIPE WORK TO BE TRUE AND LEVEL

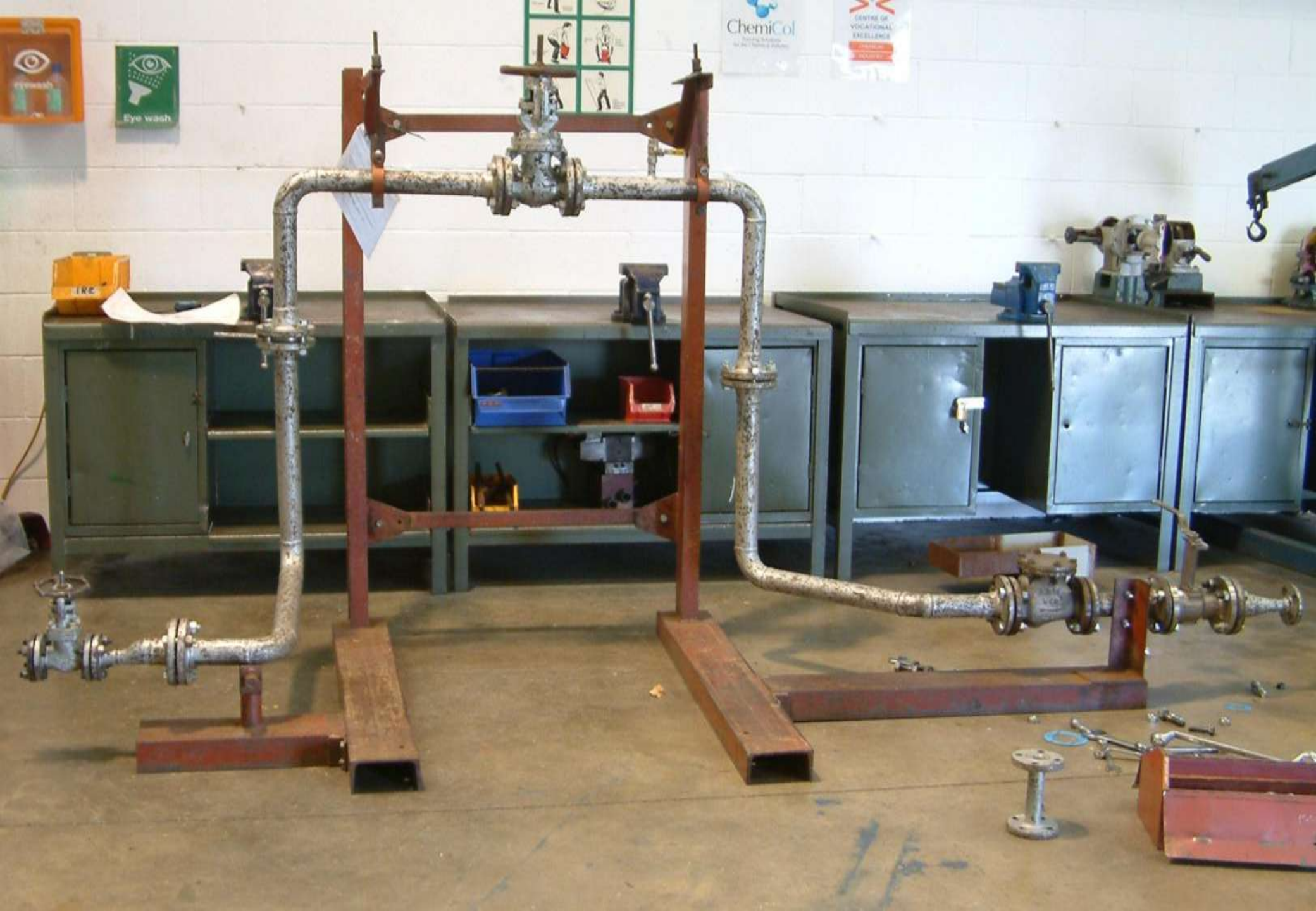
ALL DIMENSIONS IN METRIC
REMOVE ALL SHARP EDGES & BURRS

[illegible]

PROJECTION	NAME	PIPE TEST RD
	PARTNO	0001/1
	MATL	2" NB SCHD 40 MS
REPORT ANY ERRORS	FINISH	NATURAL
	MP OFF	

TOLERANCES		DESCRIPTION	
UNLESS OTHERWISE STATED DIMENSIONS TO ONE DECIMAL PLACE (0.1) 3/16 INCHES DIMENSIONS TO TWO DECIMAL PLACES (0.01) 1/32 INCHES ALL DIMENSIONS UNLESS NOTED 2. DIMENSIONS UNLESS STATED ANGULAR DIMENSIONS A.B.T.		PIPEWORK & VALVES 045	
SCALE	NTS	DATE	15-2-08
DRAWN	E.CODY	CHECK	
DWG. NUMBER / SHEET TOTAL			

**JTE** Training Tomorrow's Engineer  
www.jtefd.co.uk







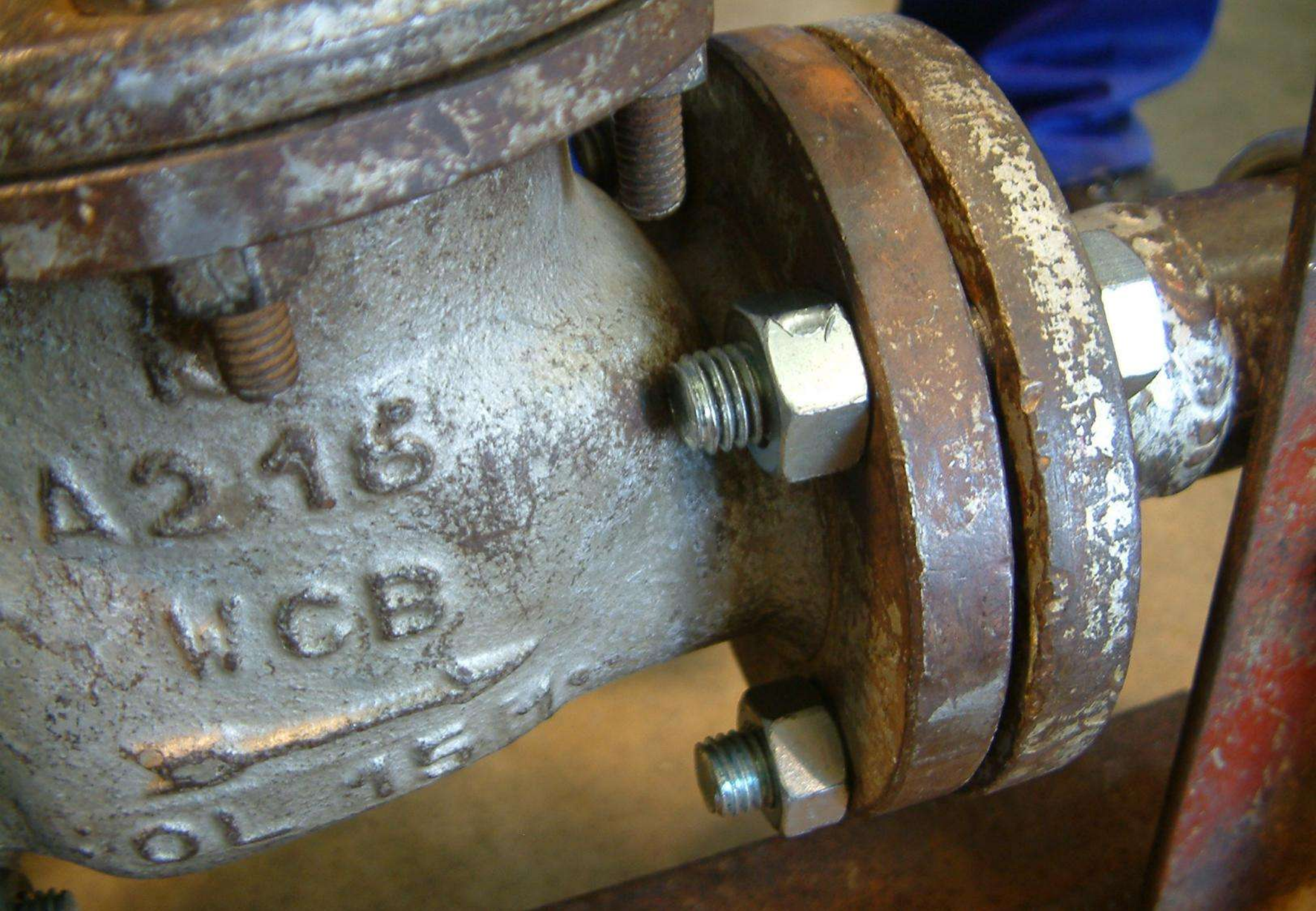


















## **PIPE RIG EXERCISE**

**Permit to work required at all times (No trainees allowed near task without a permit)**

**Carry out a RISK ASSESSMENT**

**PPE to be worn at all times**

**Rig to be erected OUTSIDE**

**Pipe isometric drawing is the main source of information**

**During erection of rig it will be periodically visually inspected**

**On completion of construction a 10 bar Hydraulic pressure test will be carried out**

**Safe depressurisation, safe opening and draining procedure to be adhered to.**

**Return all equipment to stores**

**This task will be conducted as per ON\_SITE conditions**

**NO HORSEPLAY**