

FILXBOROUGH DISASTER

Website: www.ttetraining.ltd.uk



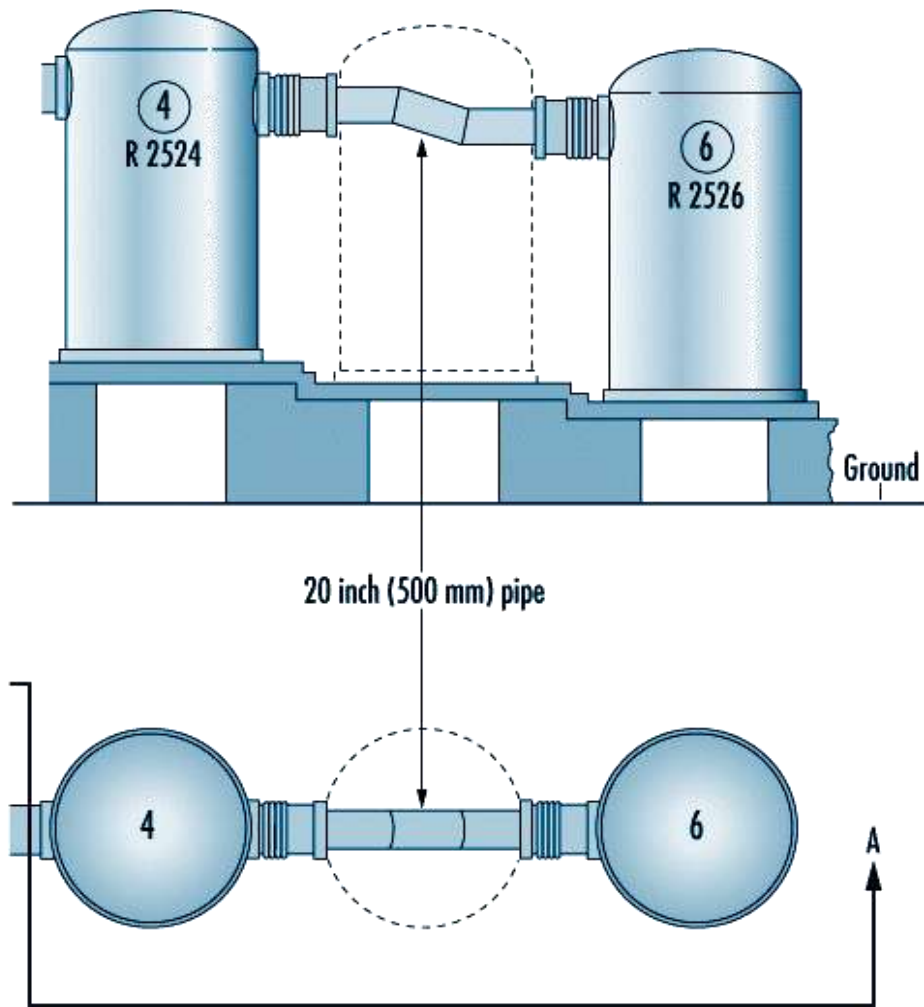
FILXBOROUGH NIPRO PLANT

Where unauthorised plant modification lead to catastrophic failure.

Filxborough Plant



Two months prior to the explosion, a crack was discovered in the number 5 reactor. It was decided to install a temporary 50 cm (20 inch) diameter pipe to bypass the leaking reactor to allow continued operation of the plant while repairs were made.



Source: Advisory Committee on Major Hazards 1984.

The bypass had been designed by engineers who were not experienced enough, this meant that the modification was not fit for purpose with unknown performance standards.

Under pressure the stress on the bellows eventually led to a catastrophic failure of the line

28 men lost their lives and again millions of pounds worth of damage.

It follows on then, from such devastating incidents a very high degree of maintained control is required on the type of equipment that is permissible in hazardous areas, and this has lead to the ATEX equipment standards