



# TTE Safety Bulletin

End-of-year edition - December 2015



## 1. Safety performance 2015

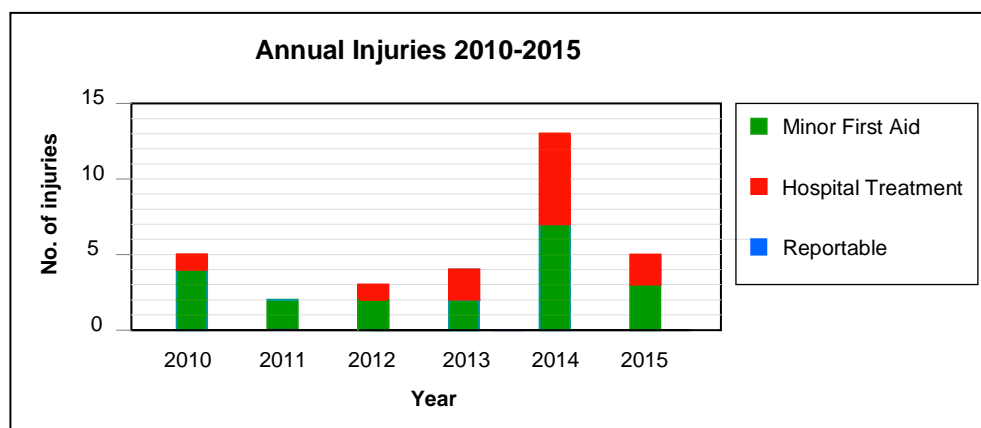
An injury-free November and December means that our final accident and injury figures for 2015 are as follows:--

- 7 years 10 months (or 3,140,075.6 person hours) worked without a lost time or (RIDDOR) reportable injury.
- 2 hospital treatment injuries (compared to 6 in 2014)
- 3 minor first-aid injuries (compared to 7 in 2014)
- 44 near miss/unsafe incident or condition reports (compared to 43 in 2014)

As shown below, this is more in keeping with past performance figures and suggests that our uncharacteristically high injury figures in 2014 was a 'one-off' occurrence rather than being due to any obvious weakness or omission in our risk control systems and arrangements.

Of particular credit to all - and in particular the 'front-line' T.O's - was the completion in August of 3 million person hours without a lost time or reportable injury whilst another notable achievement in 2015 was completing the final six months of the year without a single injury.

Our other successes in 2015 included winning a RoSPA Gold Medal and thirteenth consecutive BSC International Safety Award (with Merit) and our continuing operation of a BSC '5-Star' graded Health and Safety Management system. Well done to you all and sincere thanks for your continuing efforts, commitment and support. Here's hoping that we can do even better in 2016.



## 2. Comparison of annual statistics (2013 - 2015)

Recordable Injuries	2013	2014	2015
Reportable / Lost Time injuries	0	0	0
Classified (Hospital Treatment)	2	6	2
Minor 1 <sup>st</sup> Aid Injuries	2	7	3
<b>Total</b>	4	13	5

**Other** (not included in our end-of-year statistics)

Learning Events	5	1	0
Near Miss / Unsafe Condition Reports	43	43	44
Off-site injuries	1	2	2

## 3. Comparison of monthly injuries (2014 - 2015) (Learning Events excluded)

	Jan	Feb	Mar	Apr	May	Jun	Jul	Aug	Sept	Oct	Nov	Dec
No. of Injuries 2014	1	0	0	2	1	2	1	0	3	2	1	1
No. of Injuries 2015	0	0	2	2	0	1	0	0	0	0	0	0

#### 4. Comparison of monthly Learning Events (2014 - 2015)

	Jan	Feb	Mar	Apr	May	Jun	Jul	Aug	Sept	Oct	Nov	Dec
No. of L.E's 2014	0	0	0	0	0	1	0	0	0	0	0	0
No. of L.E's 2015	0	0	0	0	0	0	0	0	0	0	0	0

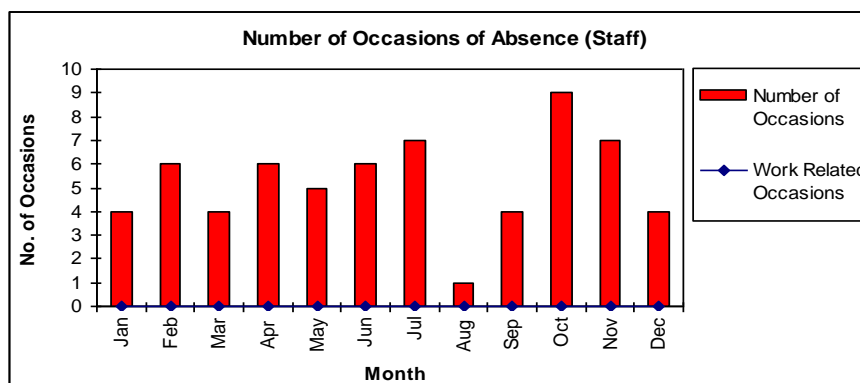
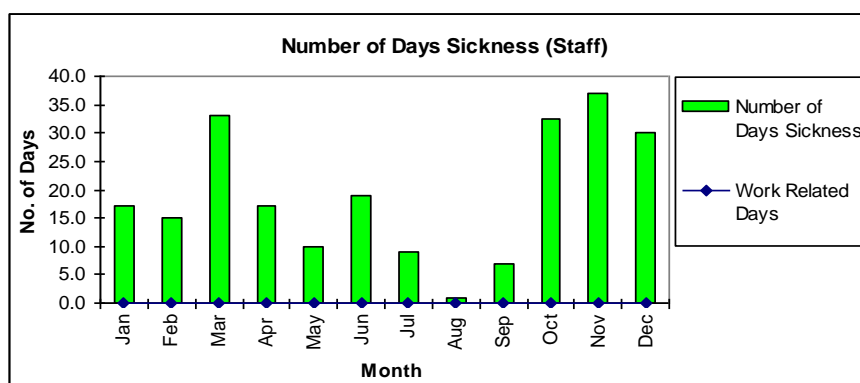
#### 5. Comparison of Annual Incident and Frequency Rates (2013 - 2015) (off-site excluded)

	2013		2014		2015	
	Excl. L.E's	Incl. L.E's	Excl. L.E's	Incl. L.E's	Excl. L.E's	Incl. L.E's
Incidence Rate	13.98	31.46	52.22	55.95	21.25	N/A
Frequency Rate	8.21	18.48	30.66	32.85	12.5	N/A

2015 Incident Rate =  $\frac{(\text{Number of Injuries per year} \times 1000)}{\text{Average number of employees \& learners (235)}}$

2015 Frequency Rate =  $\frac{(\text{Number of Injuries per year} \times 1,000,000)}{\text{Person hours worked per year}}$

#### 6. Staff sickness absence



- Total number of days lost due to sickness absence = 227.5 (compared to 185 in 2014)
- Number of occasions = 63 (compared to 51 in 2014)
- Percentage number of days lost = 2.22% (compared to 1.54% IN 2014)

#### 7. Health and safety targets and objectives for 2016

To be announced after the next board meeting in February.