



# Safety Bulletin

End of 2nd Quarter (January – June 2016)



## 1. Current accident and injury figures (up to and including 1<sup>st</sup> July 2016)

- 8 years 4 months (or 3,267,763.1 person hours) worked without a lost time or reportable injury.
- 4 minor first-aid injuries (*see table 1.1 below*).
- 17 near miss/unsafe incident or condition reports

By comparison, last year's corresponding figures were:-

- 2 hospital treatment injuries
- 3 minor first aid injuries
- 20 near miss/unsafe incident or condition reports

### 1.1. Summary of injuries 2016

Date	Injured person	Accident summary	Classification
22.01.16	Staff	Minor burn to hand after accidentally touching the still-hot tip of TIG welding torch he had just finished using.	Minor 1 <sup>st</sup> aid
09.03.16	Staff	Cut finger on sharp burr on the edge of a metal light switch pattress as he came to switch on the lights in his workshop	Minor 1 <sup>st</sup> aid
11.03.16	Phase 1	Cut thumb when spanner slipped whilst attempting to adjust the position of the tool post on a centre lathe. (failed to follow safe instruction.).	Minor 1 <sup>st</sup> aid
08.06.16	Phase 1	Cut tip of finger whilst handling thin metal shim during a machining exercise (failed to follow safe instruction).	Minor 1 <sup>st</sup> aid

## 2. Comparison of annual statistics (2014 - 2016)

	2014	2015	2016 (to date)
<b>Recordable Injuries</b>			
Reportable / Lost Time injuries	0	0	0
Classified (Hospital Treatment)	6	2	0
Minor 1 <sup>st</sup> Aid Injuries	7	3	4
<b>Total</b>	13	5	4

**Other** (not included in our end-of-year statistics)

Learning Events	1	0	0
Near Miss / Unsafe Condition Reports	43	44	17
Off-site injuries	2	2	0

## 3. Comparison of monthly injuries (2015 - 2016) (Learning Events excluded)

	Jan	Feb	Mar	Apr	May	Jun	Jul	Aug	Sept	Oct	Nov	Dec
No. of Injuries 2015	0	0	2	2	0	1	0	0	0	0	0	0
No. of Injuries 2016	1	0	2	0	0	1						

## 4. Comparison of monthly Learning Events (2015 - 2016)

	Jan	Feb	Mar	Apr	May	Jun	Jul	Aug	Sept	Oct	Nov	Dec
No. of L.E's 2015	0	0	0	0	0	0	0	0	0	0	0	0
No. of L.E's 2016	0	0	0	0	0	0						

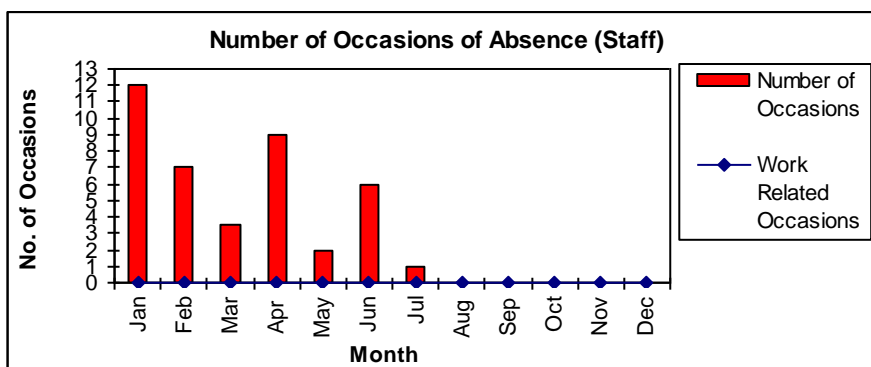
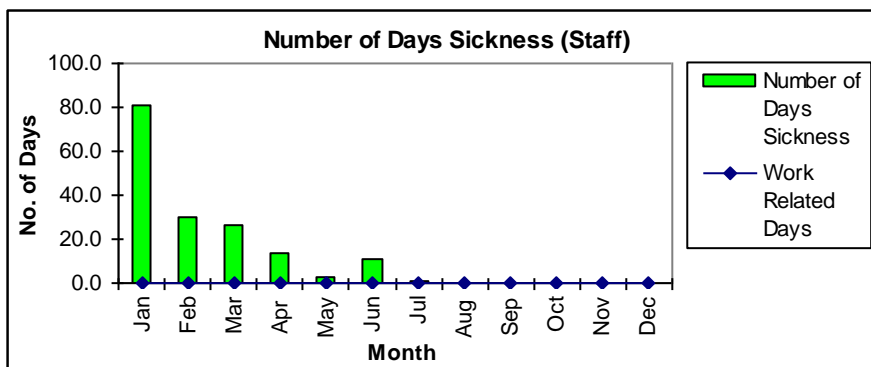
## 5. Comparison of Annual Incident and Frequency Rates (2014 - 2016) (off-site excluded)

	2014		2015		2016	
	Excl. L.E's	Incl. L.E's	Excl. L.E's	Incl. L.E's	Excl. L.E's	Incl. L.E's
Incidence Rate	52.22	55.95	21.25	N/A	16.5	N/A
Frequency Rate	30.66	32.85	12.5	N/A	9.78	N/A

2016 Incident Rate =  $\frac{(\text{Number of Injuries per year} \times 1000)}{\text{Average number of employees \& learners}}$

2016 Frequency Rate =  $\frac{(\text{Number of Injuries per year} \times 1,000,000)}{\text{Person hours worked per year}}$

## 6. Staff sickness absence (January to June)



- Total number of days lost due to sickness absence = 166.5
- Number of occasions = 41
- Percentage number of days lost = 3.17%

## 7. Annual BSC '5-Star' Health and Safety Management System Audit

Finally, a short note of thanks to all those who helped us prepare for this year's BSC '5 Star' HASMS audit and special thanks to those who participated in the auditing process.

When asked how TTE compares with the other training providers he has audited, Alan Astbury replied that "no one can touch us" which is testimony to all the hard work staff - and in particular the 'front line' Training Officers - put in to make our workplace a safe and healthy one.

Alan also unofficially told us at the end of the audit that we have comfortably retained the maximum '5-Star' grading for what will be the fifteenth consecutive year so thanks and congratulations to all.